



TRANSPORTATION CABINET

Frankfort, Kentucky 40622
www.transportation.ky.gov/

Steven L. Beshear
Governor

Michael W. Hancock, P.E.
Secretary

September 22, 2015

CALL NO. 305
CONTRACT ID NO. 151051
ADDENDUM # 1

Subject: Meade County, FD04 SPP 082 0313 NEW ROUTE
Letting September 25, 2015

- (1) Revised - Plan Sheets - R2F, R2G, R2H, R17, R17A, R22, R24, R55,
R59, R61 & R63
- (2) Revised - Bid Items - Pages 95-98 of 98
- (3) Added - Note - Pages 1-2 of 2

Proposal revisions are available at <http://transportation.ky.gov/Construction-Procurement/>.

Plan revisions are available at <http://www.lynnimaging.com/kytransportation/>.

If you have any questions, please contact us at 502-564-3500.

Sincerely,

A handwritten signature in black ink that reads "Rachel Mills".

Rachel Mills, P.E.
Director
Division of Construction Procurement

RM:ks
Enclosures



An Equal Opportunity Employer M/F/D

GENERAL SUMMARY

COUNTY OF	ITEM NO.	SHEET NO.
MEADE	04-297.65	R2F

REVISED 9/22/15

ITEM	DESCRIPTION	UNIT	MAINLINE	ACCESS RD KY 313 RT STA. 775+73	FRONTAGE RD KY 313 STA. 775+73	KY 1736	KY 448 CONNECTOR	ACCESS RD KY 1736	DOE RUN	ACCESS RD KY 313 LT STA. 801+00	ACCESS RD KY 313 LT STA. 814+34.50	CEDAR LINE & CEDAR LINE FRONT.	TOP HILL RD.	ACCESS RD KY 313 LT STA. 854+75	FRONTAGE RD KY 313 RT STA. 854+75	ENTRANCES	TOTALS
071	CRUSHED AGGREGATE SIZE NO 57	①	TON	110		10											120
078	CRUSHED AGGREGATE SIZE NO 2	②	TON	13003													13003
1000	PERFORATED PIPE-4 IN	③	LF	2136		20	36		22	26	28	130		28	36		2462
1010	NON-PERFORATED PIPE-4 IN	④	LF	1545		12	12		55	12	12	24		12	12		1696
1020	PERF PIPE HEADWALL TY 1-4 IN	⑤	EACH	7													7
1028	PERF PIPE HEADWALL TY 3-4 IN	⑥	EACH	19		1	1		1	1	1	2		1	1		28
1310	REMOVE PIPE		LF	244													244
1982	DELINEATOR FOR GUARDRAIL M/W	⑦	EACH	34													38
2014	BARRICADE-TYPE III		EACH	14													14
2091	REMOVE PAVEMENT		SOYD	13447		384											13831
2159	TEMP DITCH		LF	11347													11347
2160	CLEAN TEMP DITCH		LF	11347													11347
2191	STRUCTURE DEMOLITION	⑨	EACH	1													1
2200	ROADWAY EXCAVATION		CUYD	228002													228002
2203	STRUCTURE EXCAV-UNCLASSIFIED		CUYD	1792													1792
2223	GRANULAR EMBANKMENT	⑧	CUYD	19768		150											19918
2242	WATER	⑨	M GAL	430													430
2262	FENCE-WOVEN WIRE TYPE I		LF	19729													19729
2360	GUARDRAIL TERMINAL SECTION NO. 1		EACH	3													3
2371	GUARDRAIL END TREATMENT TYPE 7	⑩	EACH	4													6
2391	GUARDRAIL END TREATMENT TYPE 4A		EACH	3													3
2397	TEMP GUARDRAIL		LF	400													400
2429	RIGHT-OF-WAY MONUMENT TYPE 1		EACH	66		8	2										76
2432	WITNESS POST		EACH	67	6	8	2		4	2	5	2	8	2	5		111
2469	CLEAN SINKHOLE	⑪	EACH	15		2											17
2475	PLUG WATER WELL		EACH	1													1
2483	CHANNEL LINING CLASS II	⑬	TON	490		50											966
2545	CLEARING AND GRUBBING	⑭	LS	1													1
2555	CONCRETE-CLASS B		CUYD	356													356
2562	TEMPORARY SIGNS	⑮	SQFT	1396													1396
2568	MOBILIZATION		LS	1													1
2569	DEMOBILIZATION		LS	1													1
2585	EDGE KEY	⑯	LF	172		17	43		20			16	12				280
2597	FABRIC-GEOTEXTILE TYPE II	⑰	SOYD	1100		100											1200
2599	FABRIC-GEOTEXTILE TYPE IV	⑱	SOYD	46119		250											46369
2600	FABRIC GEOTEXTILE TY IV FOR PIPE	⑱	SOYD	2485	78	498			73	87	132	109		107	983		4552
2650	MAINTAIN & CONTROL TRAFFIC		LS	1													1
2651	DIVERSIONS (BY-PASS DETOURS) KY 313 DIVERSION #1		LS	1													1
2651	DIVERSIONS (BY-PASS DETOURS) KY 313 DIVERSION #2		LS	1													1
2671	PORTABLE CHANGEABLE MESSAGE SIGN		EACH	6													6
2676	MOBILIZATION FOR MILL & TEXT		LS	1													1
2677	ASPHALT PAVE MILLING & TEXTURING		TON	254			460										714
2690	SAFELoading		CUYD	9													9
2696	SHOULDER RUMBLE STRIPS-SAWED		LF	6816													6816
2701	TEMP SILT FENCE		LF	11347													11347
2703	SILT TRAP TYPE A		EACH	76													76
2704	SILT TRAP TYPE B		EACH	76													76
2705	SILT TRAP TYPE C		EACH	76													76
2706	CLEAN SILT TRAP TYPE A		EACH	228													228
2707	CLEAN SILT TRAP TYPE B		EACH	228													228
2708	CLEAN SILT TRAP TYPE C		EACH	228													228
2709	CLEAN TEMP SILT FENCE		LF	11347													11347
2726	STAKING		LS	1													1
2775	ARROW PANEL		EACH	2													2
2998	MASONRY COATING		SOYD	378													378

NOTES:

EROSION CONTROL QUANTITIES ARE BASED ON THE PROBABLE AMOUNT OF EROSION CONTROL FEATURES AS ESTIMATED BY THE DESIGNER.

- ① FOR CONTAINMENT BASINS SEE DETAIL SHEETS
- ② 6 TONS PER GEOTECH NOTE 7
16 TONS PER GEOTECH NOTE 8
13 TONS PER GEOTECH NOTE 9
2521 TONS PER GEOTECH NOTE 13
4876 TONS PER GEOTECH NOTE 14
2546 TONS PER GEOTECH NOTE 16
307 TONS PER GEOTECH NOTE 17
3546 TONS PER GEOTECH NOTE 102
- ③ 650 LF PER GEOTECH NOTE 7
1254 LF PER GEOTECH NOTE 8
558 LF PER GEOTECH NOTE 9
- ④ 585 LF PER GEOTECH NOTE 7
836 LF PER GEOTECH NOTE 8
275 LF PER GEOTECH NOTE 9
- ⑤ 2 EA PER GEOTECH NOTE 7
3 EA PER GEOTECH NOTE 8
2 EA PER GEOTECH NOTE 9
- ⑥ 4 EA PER GEOTECH NOTE 7
13 EA PER GEOTECH NOTE 8
11 EA PER GEOTECH NOTE 9
- ⑦ INCLUDES 4 FOR TEMP. GUARDRAIL
- ⑧ 5000 CY PER GEOTECH NOTE 18
8200 CY PER GEOTECH NOTE 102
5088 CY PER GEOTECH NOTE 103
1630 CY FOR RETAINING WALL
- ⑨ FOR CONTROLLING DUST CAUSED BY MAINTAINING TRAFFIC ONLY
- ⑩ FOR TEMPORARY GUARDRAIL END TREATMENT
- ⑪ 13 EA PER GEOTECH NOTE 102
4 EA PER GEOTECH NOTE 103
- ⑫ 4 PER GEOTECH NOTE 103
- ⑬ 426 TONS FROM PIPE SUMMARY
540 TONS FOR CONTAINMENT BASINS
- ⑭ APPROX. 73 ACRES
- ⑮ SEE SHEET R2G
- ⑯ INCLUDES 52 L.F. ON M.L. (KY 1638)
INCLUDES 21 L.F. ON KY 448 CONN.
- ⑰ 7755 SQ.YD. PER GEOTECH NOTE 13
15000 SQ.YD. PER GEOTECH NOTE 14
3690 SQ.YD. PER GEOTECH NOTE 16
444 SQ.YD. PER GEOTECH NOTE 17
5000 SQ.YD. PER GEOTECH NOTE 18
10402 SQ.YD. PER GEOTECH NOTE 102
3069 SQ.YD. PER GEOTECH NOTE 103
1009 SQ.YD. FOR RETAINING WALL
- ⑱ FOR WRAPPING PIPE TRENCH BACKFILL

EARTHWORK CALCULATIONS:	
EMBANKMENT:	
164015 CU. YD. EMB.	
164015 CU. YD. EMB. TOTAL	
EXCAVATION:	
193804 CU. YD. COM. EXC.	
6342 CU. YD. EMB BENCHING	
18106 CU. YD. PROFILE BENCHING	
4821 CU. YD. ROCK EXC.	
4929 CU. YD. DIT. EXC.	
*228002 CU. YD. TOTAL EXC.	

* INCLUDES 169 C.Y. FROM PIPE SUMMARY

THE EARTHWORK SHOWN ABOVE IS FOR INFORMATION ONLY. ASSUMPTIONS FOR SHRINKAGE AND SWELL FACTORS ARE THE CONTRACTOR'S RESPONSIBILITY.

⑱ 150' LT STA. 807+50 - PARCEL 415 - 3300 SF METAL STORAGE BUILDING THIS STRUCTURE SHALL BECOME THE PROPERTY OF THE CONTRACTOR. THE CONTRACTOR SHALL COMPLETE AND SUBMIT TO THE DIVISION OF AIR QUALITY FORM DEP 7036 10 DAYS BEFORE ANY DEMOLITION/REMOVAL BEGINS.

GENERAL SUMMARY

FILE NAME: Y:\KYTC\2007\207-139 MEADE 4-297-65 SEC 5\DELIVERABLES\SENT TO TRANSPORTATION CABINET\FINAL CONST PLAN SUBMITTAL\CONST. REV. #1
 USER: bmoatt\mgly
 DATE PLOTTED: September 22, 2015
 E-SHEET NAME: R0020FTS
 MicroStation v8.11.7.443

GENERAL SUMMARY

COUNTY OF	ITEM NO.	SHEET NO.
MEADE	04-297.65	R2F

REVISED 9/22/15

ITEM	DESCRIPTION	UNIT	MAINLINE	ACCESS RD KY 313 RT STA. 775+73	FRONTAGE RD KY 313 STA. 775+73	KY 1736	KY 448 CONNECTOR	ACCESS RD KY 1736	DOE RUN	ACCESS RD KY 313 LT STA. 801+00	ACCESS RD KY 313 LT STA. 814+34.50	CEDAR LINE & CEDAR LINE FRONT.	TOP HILL RD.	ACCESS RD KY 313 LT STA. 854+75	FRONTAGE RD KY 313 RT STA. 854+75	ENTRANCES	TOTALS
071	CRUSHED AGGREGATE SIZE NO 57	①	TON	110		10											120
078	CRUSHED AGGREGATE SIZE NO 2	②	TON	13003													13003
1000	PERFORATED PIPE-4 IN	③	LF	2136		20	36		22	26	28	130		28	36		2462
1010	NON-PERFORATED PIPE-4 IN	④	LF	1545		12	12		55	12	12	24		12	12		1696
1020	PERF PIPE HEADWALL TY 1-4 IN	⑤	EACH	7													7
1028	PERF PIPE HEADWALL TY 3-4 IN	⑥	EACH	19		1	1		1	1	1	2		1	1		28
1310	REMOVE PIPE		LF	244													244
1982	DELINEATOR FOR GUARDRAIL M/W	⑦	EACH	34													38
2014	BARRICADE-TYPE III		EACH	14													14
2091	REMOVE PAVEMENT		SOYD	13447		384											13831
2159	TEMP DITCH		LF	11347													11347
2160	CLEAN TEMP DITCH		LF	11347													11347
2191	STRUCTURE DEMOLITION	⑱	EACH	1													1
2200	ROADWAY EXCAVATION		CUYD	228002													228002
2203	STRUCTURE EXCAV-UNCLASSIFIED		CUYD	1792													1792
2223	GRANULAR EMBANKMENT	⑧	CUYD	19768		150											19918
2242	WATER	⑨	M GAL	430													430
2262	FENCE-WOVEN WIRE TYPE I		LF	19729													19729
2360	GUARDRAIL TERMINAL SECTION NO. 1		EACH	5													5
2371	GUARDRAIL END TREATMENT TYPE 7	⑩	EACH	4													6
2391	GUARDRAIL END TREATMENT TYPE 4A		EACH	3													3
2397	TEMP GUARDRAIL		LF	400													400
2429	RIGHT-OF-WAY MONUMENT TYPE 1		EACH	66		8	2										76
2432	WITNESS POST		EACH	67	6	8	2		4	2	5	2	8	2	5		111
2469	CLEAN SINKHOLE	⑪	EACH	15		2											17
2475	PLUG WATER WELL		EACH	1													1
2483	CHANNEL LINING CLASS II	⑬	TON	490		50											966
2545	CLEARING AND GRUBBING	⑭	LS	1													1
2555	CONCRETE-CLASS B		CUYD	356													356
2562	TEMPORARY SIGNS	⑮	SQFT	1396													1396
2568	MOBILIZATION		LS	1													1
2569	DEMOBILIZATION		LS	1													1
2585	EDGE KEY	⑯	LF	172		17	43		20			16	12				280
2597	FABRIC-GEOTEXTILE TYPE II	⑰	SOYD	1100		100											1200
2599	FABRIC-GEOTEXTILE TYPE IV	⑱	SOYD	46119		250											46369
2600	FABRIC GEOTEXTILE TY IV FOR PIPE	⑱	SOYD	2485	78	498			73	87	132	109		107	983		4552
2650	MAINTAIN & CONTROL TRAFFIC		LS	1													1
2651	DIVERSIONS (BY-PASS DETOURS) KY 313 DIVERSION #1		LS	1													1
2651	DIVERSIONS (BY-PASS DETOURS) KY 313 DIVERSION #2		LS	1													1
2671	PORTABLE CHANGEABLE MESSAGE SIGN		EACH	6													6
2676	MOBILIZATION FOR MILL & TEXT		LS	1													1
2677	ASPHALT PAVE MILLING & TEXTURING		TON	254			460										714
2690	SAFELoading		CUYD	9													9
2696	SHOULDER RUMBLE STRIPS-SAWED		LF	6816													6816
2701	TEMP SILT FENCE		LF	11347													11347
2703	SILT TRAP TYPE A		EACH	76													76
2704	SILT TRAP TYPE B		EACH	76													76
2705	SILT TRAP TYPE C		EACH	76													76
2706	CLEAN SILT TRAP TYPE A		EACH	228													228
2707	CLEAN SILT TRAP TYPE B		EACH	228													228
2708	CLEAN SILT TRAP TYPE C		EACH	228													228
2709	CLEAN TEMP SILT FENCE		LF	11347													11347
2726	STAKING		LS	1													1
2775	ARROW PANEL		EACH	2													2
2998	MASONRY COATING		SOYD	378													378

NOTES:

EROSION CONTROL QUANTITIES ARE BASED ON THE PROBABLE AMOUNT OF EROSION CONTROL FEATURES AS ESTIMATED BY THE DESIGNER.

- ① FOR CONTAINMENT BASINS SEE DETAIL SHEETS
- ② 6 TONS PER GEOTECH NOTE 7
16 TONS PER GEOTECH NOTE 8
13 TONS PER GEOTECH NOTE 9
2521 TONS PER GEOTECH NOTE 13
4876 TONS PER GEOTECH NOTE 14
2546 TONS PER GEOTECH NOTE 16
307 TONS PER GEOTECH NOTE 17
3546 TONS PER GEOTECH NOTE 102
- ③ 650 LF PER GEOTECH NOTE 7
1254 LF PER GEOTECH NOTE 8
558 LF PER GEOTECH NOTE 9
- ④ 585 LF PER GEOTECH NOTE 7
836 LF PER GEOTECH NOTE 8
275 LF PER GEOTECH NOTE 9
- ⑤ 2 EA PER GEOTECH NOTE 7
3 EA PER GEOTECH NOTE 8
2 EA PER GEOTECH NOTE 9
- ⑥ 4 EA PER GEOTECH NOTE 7
13 EA PER GEOTECH NOTE 8
11 EA PER GEOTECH NOTE 9
- ⑦ INCLUDES 4 FOR TEMP. GUARDRAIL
- ⑧ 5000 CY PER GEOTECH NOTE 18
8200 CY PER GEOTECH NOTE 102
3088 CY PER GEOTECH NOTE 103
1630 CY FOR RETAINING WALL
- ⑨ FOR CONTROLLING DUST CAUSED BY MAINTAINING TRAFFIC ONLY
- ⑩ FOR TEMPORARY GUARDRAIL END TREATMENT
- ⑪ 13 EA PER GEOTECH NOTE 102
4 EA PER GEOTECH NOTE 103
- ⑫ 4 PER GEOTECH NOTE 103
- ⑬ 426 TONS FROM PIPE SUMMARY
540 TONS FOR CONTAINMENT BASINS
- ⑭ APPROX. 73 ACRES
- ⑮ SEE SHEET R2G
- ⑯ INCLUDES 52 L.F. ON M.L. (KY 1638)
INCLUDES 21 L.F. ON KY 448 CONN.
- ⑰ 7755 SQ.YD. PER GEOTECH NOTE 13
15000 SQ.YD. PER GEOTECH NOTE 14
3690 SQ.YD. PER GEOTECH NOTE 16
444 SQ.YD. PER GEOTECH NOTE 17
5000 SQ.YD. PER GEOTECH NOTE 18
10402 SQ.YD. PER GEOTECH NOTE 102
3069 SQ.YD. PER GEOTECH NOTE 103
1009 SQ.YD. FOR RETAINING WALL
- ⑱ FOR WRAPPING PIPE TRENCH BACKFILL

EARTHWORK CALCULATIONS:

EMBANKMENT:

164015 CU. YD. EMB.
164015 CU. YD. EMB. TOTAL

EXCAVATION:

193804 CU. YD. COM. EXC.
6342 CU. YD. EMB BENCHING
18106 CU. YD. PROFILE BENCHING
4821 CU. YD. ROCK EXC.
4929 CU. YD. DIT. EXC.
*228002 CU. YD. TOTAL EXC.

* INCLUDES 169 C.Y. FROM PIPE SUMMARY

THE EARTHWORK SHOWN ABOVE IS FOR INFORMATION ONLY. ASSUMPTIONS FOR SHRINKAGE AND SWELL FACTORS ARE THE CONTRACTOR'S RESPONSIBILITY.

⑱ 150' LT STA. 807+50 - PARCEL 415 - 3300 SF METAL STORAGE BUILDING THIS STRUCTURE SHALL BECOME THE PROPERTY OF THE CONTRACTOR. THE CONTRACTOR SHALL COMPLETE AND SUBMIT TO THE DIVISION OF AIR QUALITY FORM DEP 7036 10 DAYS BEFORE ANY DEMOLITION/REMOVAL BEGINS.

GENERAL SUMMARY

FILE NAME: Y:\KYTC\2007\207-139 MEADE 4-297-65 SEC 5\DELIVERABLES\SENT TO TRANSPORTATION CABINET\FINAL CONST PLAN SUBMITTAL\CONST. REV. #1
 USER: bmoatt\mgly
 DATE PLOTTED: September 22, 2015
 E-SHEET NAME: R0020FTS
 MicroStation v8.11.7.443

PAVING AREAS

ITEM	MAINLINE	S		D		U		A		R		E		Y		A		R		D		ENTRANCES	DIVERSIONS	TOTAL PROJECT		
		ACCESS ROAD	KY 313 RT	STA. 775+73	FRONTAGE RD	KY 313 STA	775+73	KY 1736	EX. KY 448	ACCESS RD	CONNECTOR	ACCESS RD	KY 1736	DOE RUN	ACCESS RD	STA. 801+00	ACCESS RD	KY 313 LT	STA. 814+34.50	CEGAR LINE	FRONTAGE RD				TOP HILL RD	ACCESS RD
1.25" CL2 ASPHALT SURFACE 0.38D PG64-22	18868	211	212	2855	9134	1196	348	802	2015	357	1183	875	246	2438	3091	9428	53259									
1.25" CL3 ASPHALT SURFACE 0.38B PG64-22	50295														3137	50295										
2.25" CL2 ASPHALT BASE 0.75D PG64-22																3137										
3.00" CL2 ASPHALT BASE 0.75D PG64-22	17224	211	212	5739	2325	1196	348	802	2015	357	1183	875	246	2438	2735	37906										
3.00" CL3 ASPHALT BASE 0.75D PG64-22	44763															44763										
3.00" CL3 ASPHALT BASE 1.00D PG64-22	45280															45280										
3.25" CL3 ASPHALT BASE 1.00D PG64-22	45911															45911										
4" CRUSHED STONE BASE	46594															46594										
8" CRUSHED STONE BASE		211	212	2325	1196	348	802	2015	357	1183	875	246	2438	2735	14942											
10.25" CRUSHED STONE BASE	17224															17224										
4" TRAFFIC BOUND BASE																2452										
ASPHALT SEAL COAT	5124															5124										
ASPHALT SEAL AGGREGATE	5124															5124										
CEMENT CONCRETE ENTRANCE PAVEMENT - 8 IN																261										
10' LIME STABILIZED ROADBED	61610															61610										
LIME	61610															61610										
ASPHALT CURING SEAL	61610															61610										
SAND FOR BLOTTER	61610															61610										

① INCLUDES 188 S. Y. FOR BACKFILLING MILLING AREAS

PAVING SUMMARY

ITEM CODE	ITEM	UNIT	MAINLINE	ACCESS ROAD	KY 313 RT	STA. 775+73	FRONTAGE RD	KY 313 STA	775+73	KY 1736	EX. KY 448	ACCESS RD	CONNECTOR	ACCESS RD	KY 1736	DOE RUN	ACCESS RD	STA. 801+00	ACCESS RD	KY 313 LT	STA. 814+34.50	CEGAR LINE	FRONTAGE RD	TOP HILL RD	ACCESS RD	KY 313 LT	STA. 854+75	FRONTAGE RD	KY 313 LT	STA. 854+75	ENTRANCES	DIVERSIONS	TOTAL PROJECT
3	CRUSHED STONE BASE	①③ TON	37214	100	101	674	1085	565	166	378	955	169	557	416	118	1152	798	1294	46744														
20	TRAFFIC BOUND BASE	TON																															539
13	LIME STABILIZED ROADBED	SOYD	61610																														61610
14	LIME	④ TON	1289																														1289
100	ASPHALT SEAL AGGREGATE	② TON	102																														102
103	ASPHALT SEAL COAT	② TON	12																														12
190	LEVELING & WEDGING PG64-22	TON	140																														140
214	CL3 ASPHALT BASE 1.00D PG64-22	TON	15678																														15678
221	CL2 ASPH BASE 0.75D PG64-22	TON	2862	35	35	964	385	199	58	133	336	59	197	146	41	406	386	453	6696														
223	CL3 ASPH BASE 0.75D PG64-22	TON	7429																														7429
301	CL2 ASPHALT SURFACE 0.38D PG64-22	TON	1297	15	15	196	628	82	24	55	139	25	81	60	17	168	213	648	3662														
358	ASPHALT CURING SEAL	⑤ TON	62																														62
388	CL3 ASPH SURF 0.38B PG64-22	TON	3458																														3458
2101	CEMENT CONCRETE ENTRANCE PAVEMENT - 8 IN	SOYD																															261
2702	SAND FOR BLOTTER	⑥ TON	154																														154

NOTES

ALL ASHALT MIXTURES SHALL BE ESTIMATED AT 110 LBS. PER SQ. YD. PER INCH OF DEPTH, UNLESS NOTED OTHERWISE.

① ESTIMATED AT 115 LBS. PER SQ. YD. PER INCH OF DEPTH.

② ASPHALT SEAL COAT @ 2.4 LBS./S. Y. ASPHALT SEAL AGGREGATE @ 20 LBS./S. Y. (TOTAL INCLUDES 2 APPLICATIONS)

③ 16346 TONS ADDED FOR CSB KY 313 SHOULDER WEDGE 500 TONS ADDED FOR MAINTAINING ENTRANCES DURING CONSTRUCTION 500 TONS ADDED FOR TEMPORARY SHOULDER WEDGE FOR MAINTAINING DROP OFFS

④ ESTIMATED AT 6% BY WEIGHT AT 93 LBS. PER CU. FT.

⑤ ESTIMATED AT 2 L.B./S. Y. OF ASPHALT CURING SEAL

⑥ ESTIMATED AT 5 L.B./S. Y. OF SAND FOR BLOTTER

PAVING AREAS

ITEM	MAINLINE	S		D		U		A		R		E		Y		A		R		D		ENTRANCES	DIVERSIONS	TOTAL PROJECT		
		ACCESS ROAD	KY 313 RT	STA. 775+73	FRONTAGE RD	KY 313 STA	775+73	KY 1736	EX. KY 448	ACCESS RD	KY 1736	DOE RUN	ACCESS RD	KY 313 LT	STA. 801+00	ACCESS RD	KY 313 LT	STA. 814+34.50	CEDAR	LINE RD	FRONTAGE RD				TOP HILL RD	ACCESS RD
1.25" CL2 ASPHALT SURFACE 0.38D PG64-22	18868	211	212	2855	9134	1196	348	802	2015	357	1183	875	246	2438	3091	9428	53259									
1.25" CL3 ASPHALT SURFACE 0.38B PG64-22	50295														3137	50295										
2.25" CL2 ASPHALT BASE 0.75D PG64-22																3137	3137									
3.00" CL2 ASPHALT BASE 0.75D PG64-22	17224	211	212	5739	2325	1196	348	802	2015	357	1183	875	246	2438	2735	37906										
3.00" CL3 ASPHALT BASE 0.75D PG64-22	44763															44763										
3.00" CL3 ASPHALT BASE 1.00D PG64-22	45280															45280										
3.25" CL3 ASPHALT BASE 1.00D PG64-22	45911															45911										
4" CRUSHED STONE BASE	46594															46594										
8" CRUSHED STONE BASE		211	212	2325	1196	348	802	2015	357	1183	875	246	2438	2735	14942											
10.25" CRUSHED STONE BASE	17224															17224										
4" TRAFFIC BOUND BASE																2452										
ASPHALT SEAL COAT	5124															5124										
ASPHALT SEAL AGGREGATE	5124															5124										
CEMENT CONCRETE ENTRANCE PAVEMENT - 8 IN																261										
10' LIME STABILIZED ROADBED	61610															61610										
LIME	61610															61610										
ASPHALT CURING SEAL	61610															61610										
SAND FOR BLOTTER	61610															61610										

① INCLUDES 188 S. Y. FOR BACKFILLING MILLING AREAS

PAVING SUMMARY

ITEM CODE	ITEM	UNIT	MAINLINE	ACCESS ROAD	STA. 775+73	FRONTAGE RD	KY 313 STA	775+73	KY 1736	EX. KY 448	CONNECTOR	ACCESS RD	KY 1736	DOE RUN	ACCESS RD	KY 313 LT	STA. 801+00	ACCESS RD	KY 313 LT	STA. 814+34.50	CEDAR	LINE RD	FRONTAGE RD	TOP HILL RD	ACCESS RD	KY 313 LT	STA. 854+75	FRONTAGE RD	KY 313 LT	STA. 854+75	ENTRANCES	DIVERSIONS	TOTAL PROJECT
3	CRUSHED STONE BASE	①③ TON	37214	100	101	674	1085	565	166	378	955	169	557	416	118	1152	798	1294	46744														
20	TRAFFIC BOUND BASE	TON																															539
13	LIME STABILIZED ROADBED	SOYD	61610																														61610
14	LIME	④ TON	1289																														1289
100	ASPHALT SEAL AGGREGATE	② TON	102																														102
103	ASPHALT SEAL COAT	② TON	12																														12
190	LEVELING & WEDGING PG64-22	TON	140																														140
214	CL3 ASPHALT BASE 1.00D PG64-22	TON	15678																														15678
221	CL2 ASPH BASE 0.75D PG64-22	TON	2862	35	35	964	385	199	58	133	336	59	197	146	41	406	386	453	6696														
223	CL3 ASPH BASE 0.75D PG64-22	TON	7429																	7429													
301	CL2 ASPHALT SURFACE 0.38D PG64-22	TON	1297	15	15	196	628	82	24	55	139	25	81	60	17	168	213	648	3662														
358	ASPHALT CURING SEAL	⑤ TON	62																	62													
388	CL3 ASPH SURF 0.38B PG64-22	TON	3458																	3458													
2101	CEMENT CONCRETE ENTRANCE PAVEMENT - 8 IN	SOYD																														261	
2702	SAND FOR BLOTTER	⑥ TON	154																	154													

NOTES

ALL ASHALT MIXTURES SHALL BE ESTIMATED AT 110 LBS. PER SQ. YD. PER INCH OF DEPTH, UNLESS NOTED OTHERWISE.

- ① ESTIMATED AT 115 LBS. PER SQ. YD. PER INCH OF DEPTH.
- ② ASPHALT SEAL COAT @ 2.4 LBS./S. Y. ASPHALT SEAL AGGREGATE @ 20 LBS./S. Y. (TOTAL INCLUDES 2 APPLICATIONS)
- ③ 16346 TONS ADDED FOR CSB KY 313 SHOULDER WEDGE 500 TONS ADDED FOR MAINTAINING ENTRANCES DURING CONSTRUCTION 500 TONS ADDED FOR TEMPORARY SHOULDER WEDGE FOR MAINTAINING DROP OFFS
- ④ ESTIMATED AT 6% BY WEIGHT AT 93 LBS. PER CU. FT.
- ⑤ ESTIMATED AT 2 L.B./S. Y. OF ASPHALT CURING SEAL
- ⑥ ESTIMATED AT 5 L.B./S. Y. OF SAND FOR BLOTTER

FILE NAME: Y:\KYTC\2007\207-139 MEADE 4-297-65 SEC 5\DELIVERABLES\SENT TO TRANSPORTATION CABINET\TP440 REVISION\70700PL.DGN
 USER: bmoat@indy DATE PLOTTED: September 11, 2015
 E-SHEET NAME: ROT00PL
 MicroStation v8.11.7.443

ACCESS RD. KY 313 STA. 854+75 DITCH CONSTRUCTION LT. CHANNEL LINING						
STA. TO STA.	SIZE/TYPE	LENGTH	TYPE	D	T	QUANTITY
48+00 - 48+75	SPCL. "V" DT.	75 FT	ECB	1	-	69 SQ. YDS.
48+75 - 49+20	SURF. DT.	45 FT	ECB	1	-	41 SQ. YDS.

DITCH CONSTRUCTION SOUTHBOUND						
STA. TO STA.	SIZE/TYPE	LENGTH	TYPE	D	T	QUANTITY
845+00 - 845+20	4' F.B. RDWY. DT.	50 FT	ECB	1	-	25 SQ. YDS.
845+20 - 850+30	SPCL. 4' F.B. RDWY. DT.	510 FT	ECB	1	-	695 SQ. YDS.
850+30 - 850+50	SPCL. 4' F.B. RDWY. DT.	20 FT	ECB	1	-	25 SQ. YDS.
850+50 - 853+00	4' F.B. RDWY. DT.	250 FT	ECB	1	-	315 SQ. YDS.
853+00 - 854+00	4' F.B. SURF. DT.	100 FT	ECB	1	-	126 SQ. YDS.

FRONTAGE RD. DITCH CONSTRUCTION LT.						
STA. TO STA.	SIZE/TYPE	LENGTH	TYPE	D	T	QUANTITY
41+20 - 41+75	NORM. RDWY. DT.	55 FT	ECB	1	-	50 SQ. YDS.
43+00 - 45+00	NORM. RDWY. DT.	200 FT	ECB	1	-	141 SQ. YDS.
45+00 - 47+00	SPCL. "V" DT.	200 FT	ECB	1	-	141 SQ. YDS.
47+00 - 48+25	NORM. RDWY. DT.	125 FT	TRM	1	1	88 SQ. YDS.
48+25 - 48+75	SPCL. "V" DT.	100 FT	TRM	1	1	71 SQ. YDS.
48+75 - 49+50	SPCL. "V" DT.	75 FT	ECB	1	-	53 SQ. YDS.

RURAL ENTRANCE CONSTRUCTION FRONTAGE ROAD						
STATION	SURFACE	WIDTH	TYPE	PIPE	SURFACE	
42+60	TBB	16'	RES.	-	-	98
46+24	TBB	16'	FIELD	36"	15"	121

RURAL ENTRANCE CONSTRUCTION ACCESS ROAD						
STATION	SURFACE	WIDTH	TYPE	PIPE	SURFACE	
48+60 LT.	ASPHALT	20'	FIELD	57"	15"	274

CONSTRUCT W/W. FENCE TYPE 1 SOUTHBOUND		
BEGIN STATION	END STATION	LENGTH
845+00	854+10	88 FT
855+64.46	856+52.07	84 FT

FILL AND CAP SINK HOLE			
STATION	SIDE LT. OR RT.	OFFSET	
M.L. 854+82		65'	

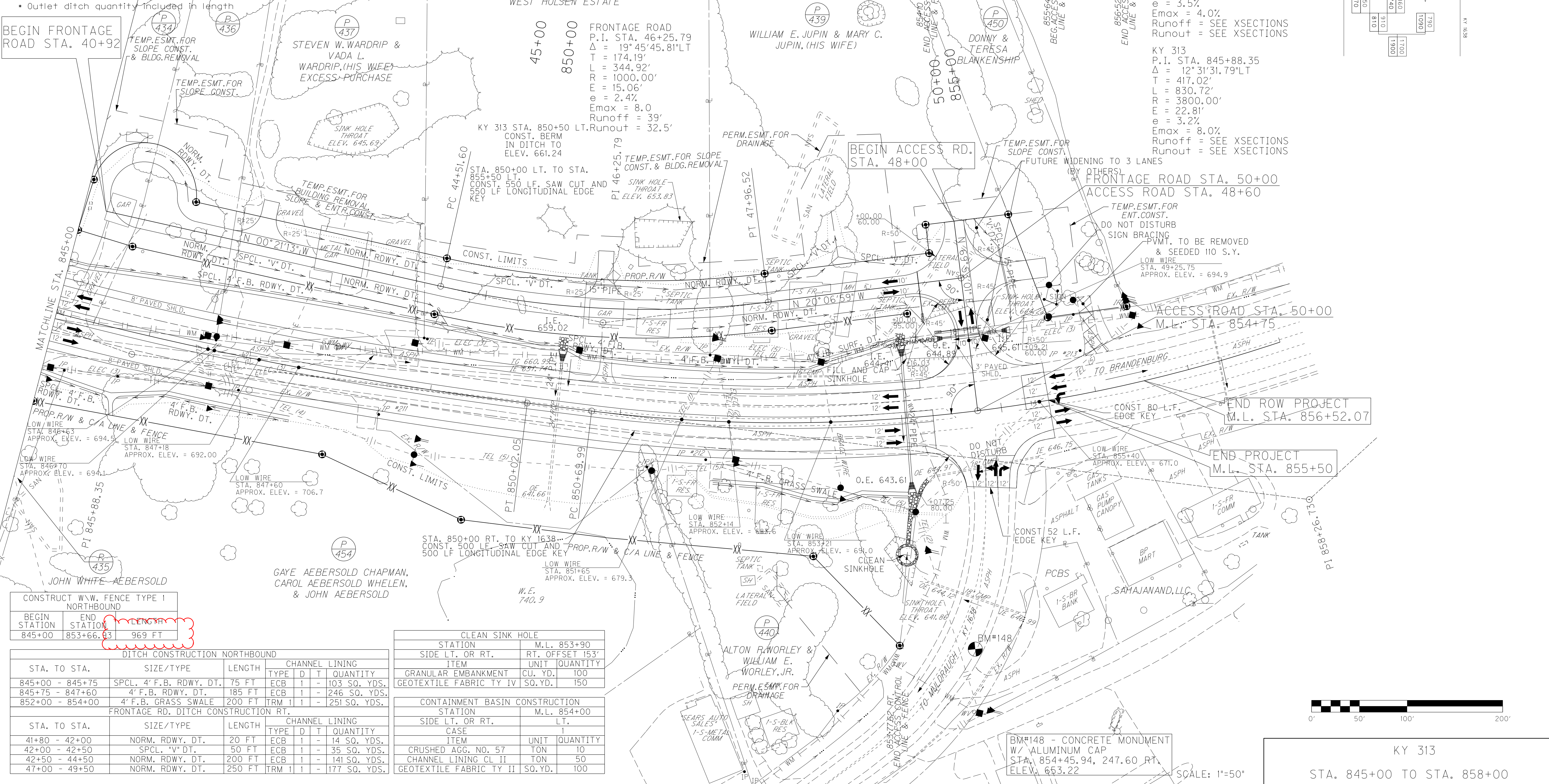
ITEM		
ITEM	UNIT	QUANTITY
GRANULAR EMBANKMENT	CU. YD.	282
GEOTEXTILE FABRIC TY IV	SO. YD.	539
CLEAN SINKHOLE	EACH	1

P 434 COREY B. BENAVIDEZ, (SINGLE) AND RONALD MORENO & LORETTA MORENO, (HUSBAND AND WIFE)

P 436 CHARLES A. JENKINS & MARGARET L. JENKINS, (HUSBAND AND WIFE) AND EDDIE M. SIPES & ELIZABETH D. SIPES, (HUSBAND AND WIFE)

REVISED 9/18/2015

COUNTY OF	ITEM NO.	SHEET NO.
MEADE	04-297.65	R17



• Outlet ditch quantity included in length

BEGIN FRONTAGE ROAD STA. 40+92

WEST HOLSEN ESTATE

WILLIAM E. JUPIN & MARY C. JUPIN, (HIS WIFE)

DONNY & TERESA BLANKENSHIP

JOHN WHITE AEBERSOLD

GAYE AEBERSOLD CHAPMAN, CAROL AEBERSOLD WHELEN, & JOHN AEBERSOLD

ALTON R. WORLEY & WILLIAM E. WORLEY, JR.

CONSTRUCT W/W. FENCE TYPE 1 NORTHBOUND		
BEGIN STATION	END STATION	LENGTH
845+00	853+66.83	969 FT

DITCH CONSTRUCTION NORTHBOUND						
STA. TO STA.	SIZE/TYPE	LENGTH	TYPE	D	T	QUANTITY
845+00 - 845+75	SPCL. 4' F.B. RDWY. DT.	75 FT	ECB	1	-	103 SQ. YDS.
845+75 - 847+60	4' F.B. RDWY. DT.	185 FT	ECB	1	-	246 SQ. YDS.
852+00 - 854+00	4' F.B. GRASS SWALE	200 FT	TRM	1	1	251 SQ. YDS.

FRONTAGE RD. DITCH CONSTRUCTION RT.						
STA. TO STA.	SIZE/TYPE	LENGTH	TYPE	D	T	QUANTITY
41+80 - 42+00	NORM. RDWY. DT.	20 FT	ECB	1	-	14 SQ. YDS.
42+00 - 42+50	SPCL. "V" DT.	50 FT	ECB	1	-	35 SQ. YDS.
42+50 - 44+50	NORM. RDWY. DT.	200 FT	ECB	1	-	141 SQ. YDS.
47+00 - 49+50	NORM. RDWY. DT.	250 FT	TRM	1	1	177 SQ. YDS.

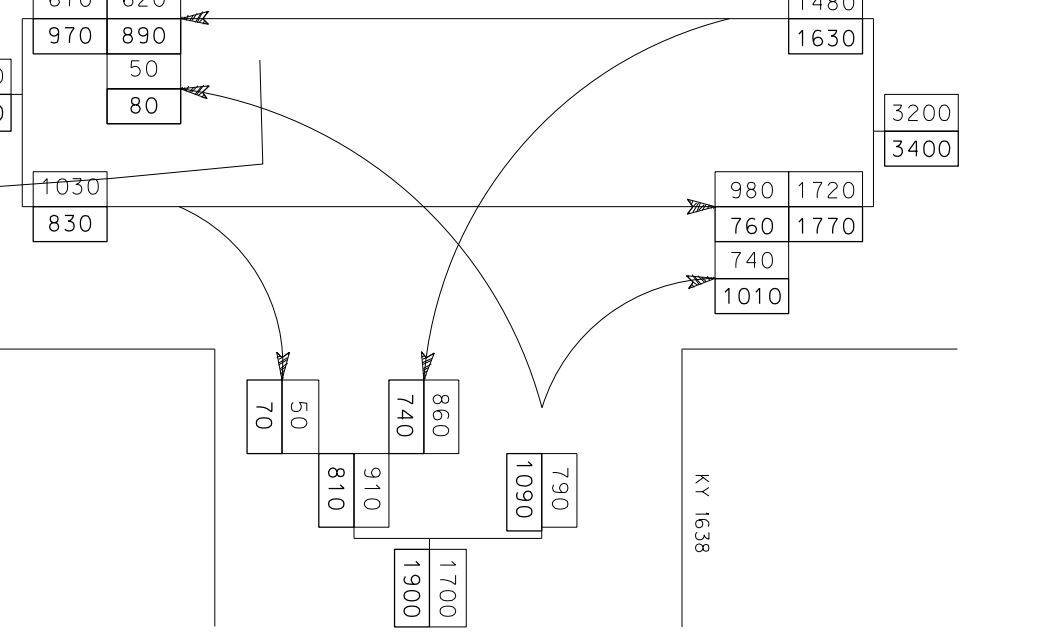
CLEAN SINK HOLE			
STATION	M.L.	RT. OFFSET	
853+90		153'	

ITEM		
ITEM	UNIT	QUANTITY
GRANULAR EMBANKMENT	CU. YD.	100
GEOTEXTILE FABRIC TY IV	SO. YD.	150

CONTAINMENT BASIN CONSTRUCTION			
STATION	M.L.	LT.	
854+00			

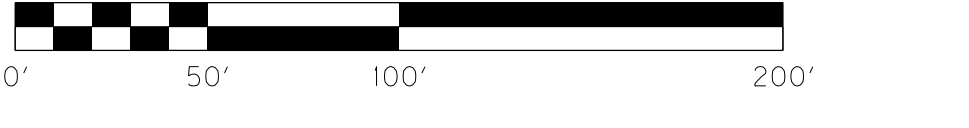
CASE		
ITEM	UNIT	QUANTITY
CRUSHED AGG. NO. 57	TON	10
CHANNEL LINING CL II	TON	50
GEOTEXTILE FABRIC TY II	SO. YD.	100

2029 DHVS-AM
2029 DHVS-PM



KY 313
P.I. STA. 858+26.73
Δ = 49° 32' 22.70" LT
T = 756.74'
L = 1417.99'
R = 1640.00'
E = 166.17'
e = 3.5%
Emax = 4.0%
Runoff = SEE XSECTIONS
Runout = SEE XSECTIONS

KY 313
P.I. STA. 845+88.35
Δ = 12° 31' 31.79" LT
T = 417.02'
L = 830.72'
R = 3800.00'
E = 22.81'
e = 3.2%
Emax = 8.0%
Runoff = SEE XSECTIONS
Runout = SEE XSECTIONS



SCALE: 1"=50'
KY 313
STA. 845+00 TO STA. 858+00

BM#148 - CONCRETE MONUMENT W/ ALUMINUM CAP
STA. 854+45.94, 247.60 RT.
ELEV. 653.22

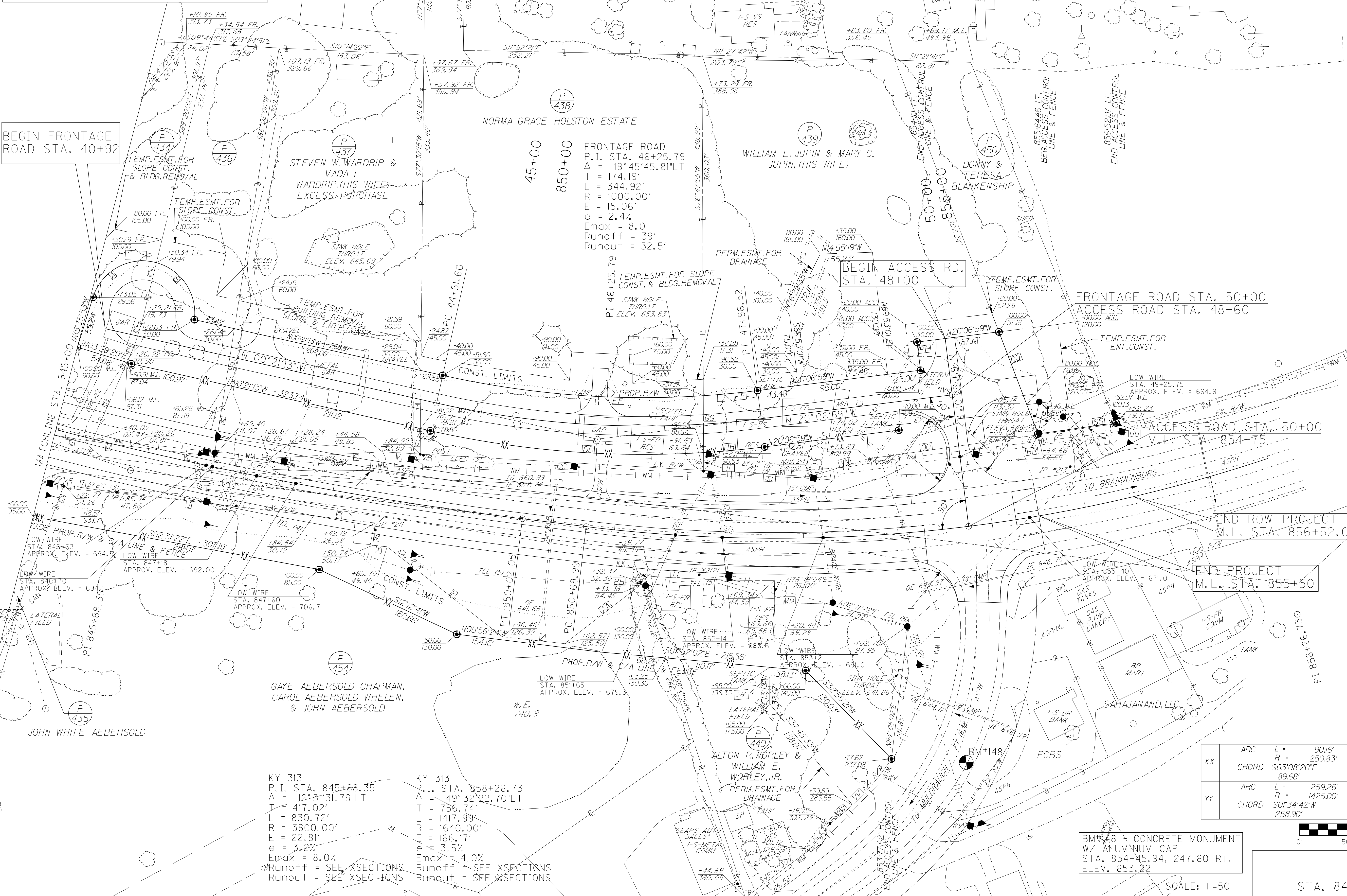
RIGHT OF WAY DETAIL

REVISED 9/18/2015

COUNTY OF	ITEM NO.	SHEET NO.
MEADE	04-297.65	RITA

P 434	COREY B. BENAVIDEZ, (SINGLE) AND RONALD MORENO & LORETTA MORENO, (HUSBAND AND WIFE)
P 436	CHARLES A. JENKINS & MARGARET L. JENKINS, (HUSBAND AND WIFE) AND EDDIE M. SIPES & ELIZABETH D. SIPES, (HUSBAND AND WIFE)

FILE NAME: Y:\KYCT 2007\207-139 MEADE 4-297-65 SEC 5\DELIVERABLES\SENT TO TRANSPORTATION CABINET\P440 REVISION\RO70APL.DGN
 USER: bmohtindly
 DATE PLOTTED: September 11, 2015
 E-SHEET NAME: RO70APL
 MicroStation v8.11.7.443



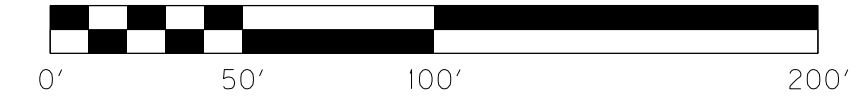
FRONTAGE ROAD
 P.I. STA. 46+25.79
 $\Delta = 19^\circ 45' 45.81''$
 $T = 174.19'$
 $R = 344.92'$
 $E = 1000.00'$
 $\theta = 15.06'$
 $\epsilon = 2.4\%$
 $E_{max} = 8.0'$
 $Runoff = 39'$
 $Runout = 32.5'$

KY 313
 P.I. STA. 845+88.35
 $\Delta = 12^\circ 31' 31.79''$
 $T = 417.02'$
 $L = 830.72'$
 $R = 3800.00'$
 $E = 22.81'$
 $\epsilon = 3.2\%$
 $E_{max} = 8.0'$
 $Runoff = SEE XSECTIONS$
 $Runout = SEE XSECTIONS$

KY 313
 P.I. STA. 858+26.73
 $\Delta = 49^\circ 32' 22.70''$
 $T = 756.74'$
 $L = 1417.99'$
 $R = 1640.00'$
 $E = 16.17'$
 $\epsilon = 3.5\%$
 $E_{max} = 4.0'$
 $Runoff = SEE XSECTIONS$
 $Runout = SEE XSECTIONS$

I.D.	BEARING	DISTANCE
A	ARC L = 84.32'	
	R = 55.00'	
B	ARC L = 72.31'	
	R = 55.00'	
C	ARC L = 64.22'	
	R = 26.73'	
D	ARC L = 1375.00'	
	R = 108.04'	
E	ARC L = 40.44'	
	R = 1375.00'	
F	ARC L = 64.35'	
	R = 1425.00'	
G	ARC L = 201.39'	
	R = 89.47'	
H	ARC L = 59.27'	
	R = 76.52'	
I	ARC L = 60.12'	
	R = 39.64'	
J	ARC L = 5.01'	
	R = 5.01'	
K	ARC L = 65.24'	
	R = 118.57'	
L	ARC L = 61.37'	
	R = 26.92'	
M	ARC L = 40.07'	
	R = 23.65'	
N	ARC L = 15.17'	
	R = 154.34'	
O	ARC L = 66.31'	
	R = 102.66'	
P	ARC L = 2.34'	
	R = 299.76'	
Q	ARC L = 290.45'	
	R = 1030.00'	
R	ARC L = 277.00'	
	R = 970.00'	
S	ARC L = 57.57'	
	R = 970.00'	
T	ARC L = 60.11'	
	R = 64.82'	
U	ARC L = 18.85'	
	R = 112.49'	
V	ARC L = 10.24'	
	R = 133.12'	
W	ARC L = 52.93'	
	R = 1714.50'	
X	ARC L = 63.95'	
	R = 263.31'	
Y	ARC L = 30.82'	
	R = 263.31'	
Z	ARC L = 63.95'	
	R = 263.31'	

BM#148 CONCRETE MONUMENT
 W/ ALUMINUM CAP
 STA. 854+45.94, 247.60 RT.
 ELEV. 653.22



SCALE: 1"=50'

KY 313
 STA. 845+00 TO STA. 858+00

RIGHT OF WAY DETAIL

REVISED 9/18/2015

COUNTY OF	ITEM NO.	SHEET NO.
MEADE	04-297.65	RITA

P 434	COREY B. BENAVIDEZ, (SINGLE) AND RONALD MORENO & LORETTA MORENO, (HUSBAND AND WIFE)
P 436	CHARLES A. JENKINS & MARGARET L. JENKINS, (HUSBAND AND WIFE) AND EDDIE M. SIPES & ELIZABETH D. SIPES, (HUSBAND AND WIFE)

FILE NAME: Y:\KYTC\2007\207-139 MEADE 4-297-65 SEC 5\DELIVERABLES\SENT TO TRANSPORTATION CABINET\P440 REVISION\RO70APL.DGN
 USER: bmohtindly
 DATE PLOTTED: September 11, 2015
 E-SHEET NAME: RO70APL
 MicroStation v8.11.7.443

BEGIN FRONTAGE ROAD STA. 40+92

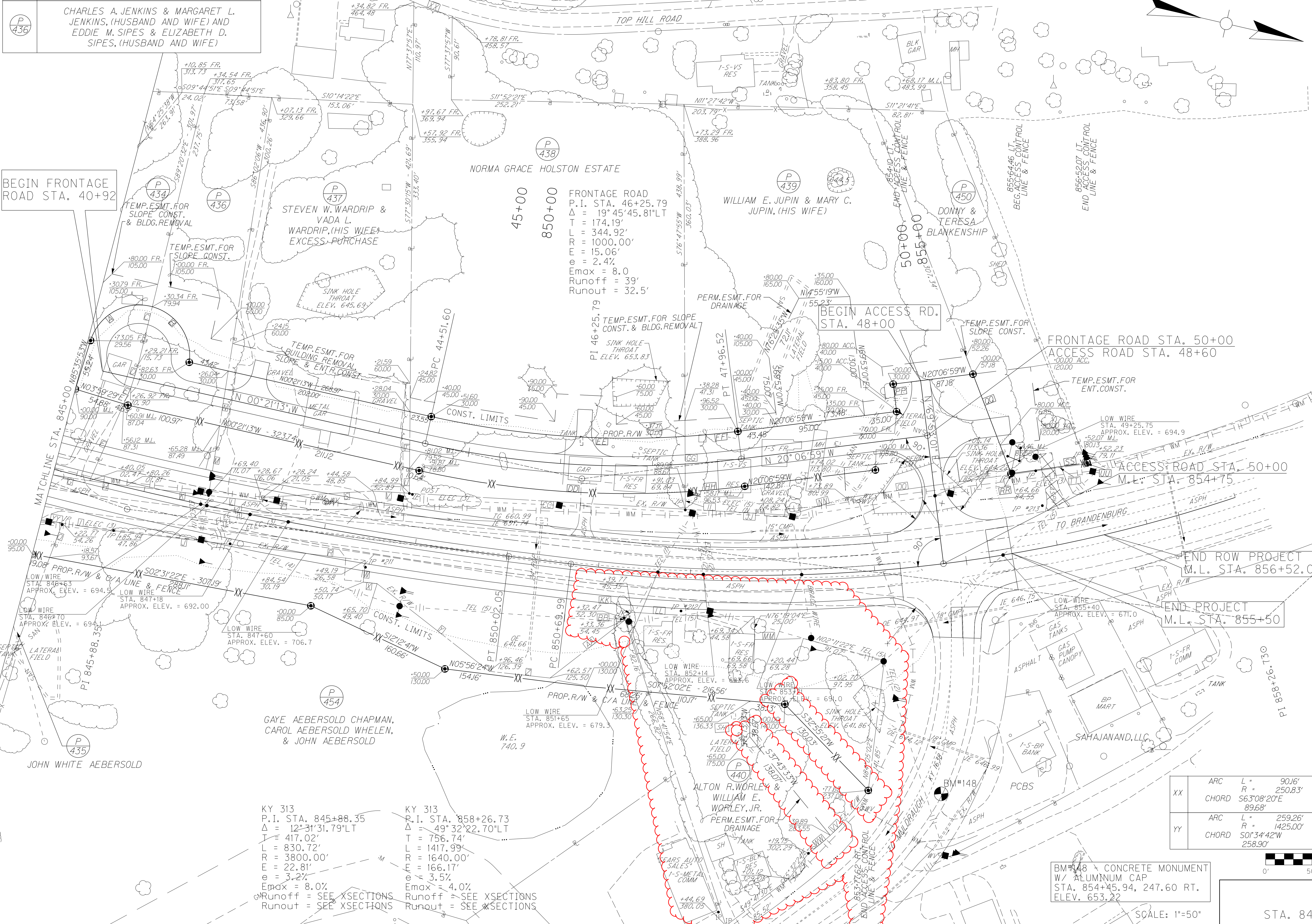
BEGIN ACCESS RD. STA. 48+00

FRONTAGE ROAD STA. 50+00
 ACCESS ROAD STA. 48+60

ACCESS ROAD STA. 50+00
 M.L. STA. 854+75

END ROW PROJECT M.L. STA. 856+52.07

END PROJECT M.L. STA. 855+50



FRONTAGE ROAD
 P.I. STA. 46+25.79
 $\Delta = 19^\circ 45' 45.81''$
 $T = 174.19'$
 $L = 344.92'$
 $R = 1000.00'$
 $E = 15.06'$
 $\theta = 2.4\%$
 $E_{max} = 8.0'$
 $Runoff = 39'$
 $Runout = 32.5'$

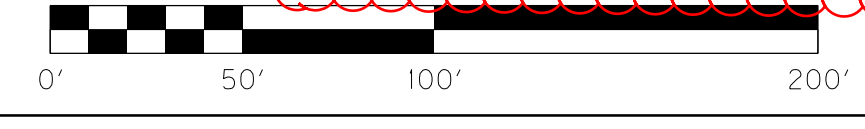
KY 313
 P.I. STA. 845+88.35
 $\Delta = 12^\circ 31' 31.79''$
 $T = 417.02'$
 $L = 830.72'$
 $R = 3800.00'$
 $E = 22.81'$
 $\theta = 3.2\%$
 $E_{max} = 8.0'$
 $Runoff = SEE XSECTIONS$
 $Runout = SEE XSECTIONS$

KY 313
 P.I. STA. 858+26.73
 $\Delta = 49^\circ 32' 22.70''$
 $T = 756.74'$
 $L = 1417.99'$
 $R = 1640.00'$
 $E = 16.61'$
 $\theta = 3.5\%$
 $E_{max} = 4.0'$
 $Runoff = SEE XSECTIONS$
 $Runout = SEE XSECTIONS$

XX	ARC	L = 90.16'	R = 250.83'
	CHORD	S63°08'20"E 89.68'	
YY	ARC	L = 259.26'	R = 1425.00'
	CHORD	S01°34'42"W 258.90'	

I.D.	BEARING	DISTANCE
A	ARC	L = 84.32'
	CHORD	N47°40'49"W 76.30'
B	ARC	L = 72.31'
	CHORD	N43°20'03"E 78.90'
C	N89°20'32"W	64.22'
D	N85°26'16"W	26.73'
E	N79°05'07"W	19.12'
F	N79°05'07"W	9.17'
G	ARC	L = 108.07'
	CHORD	S02°17'04"E 108.04'
H	ARC	L = 40.44'
	CHORD	S05°22'43"E 40.44'
I	ARC	L = 64.35'
	CHORD	N04°55'39"W 64.35'
J	N06°13'16"W	201.39'
K	S06°13'16"E	89.47'
L	S06°13'16"E	59.27'
M	N86°02'06"E	76.52'
N	N86°02'06"E	60.12'
O	S82°31'02"E	39.64'
P	N83°16'02"E	5.01'
Q	NOT USED	-
R	N06°21'03"W	65.24'
S	S16°16'20"E	118.57'
T	S77°30'15"W	61.37'
U	S77°30'15"W	26.92'
V	S09°41'13"E	40.07'
W	N82°31'50"E	23.65'
X	N06°43'58"W	15.17'
Y	N25°01'20"E	154.34'
Z	N06°43'58"W	66.31'
AA	N58°41'53"W	102.66'
BB	S58°41'54"W	2.34'
CC	S09°41'13"E	29.76'
DD	ARC	L = 290.45'
	CHORD	S08°25'56"E 289.49'
EE	ARC	L = 277.00'
	CHORD	N08°32'05"W 276.06'
FF	ARC	L = 57.57'
	CHORD	N18°24'58"W 57.57'
GG	S76°47'55"W	60.11'
HH	ARC	L = 64.82'
	CHORD	S18°18'49"E 64.81'
II	S76°47'55"W	18.85'
JJ	S09°41'13"E	12.49'
KK	N51°01'08"W	10.24'
LL	ARC	L = 133.12'
	CHORD	N10°59'59"W 133.09'
MM	ARC	L = 52.93'
	CHORD	N14°09'01"W 52.93'
NN	S29°53'37"E	64.78'
OO	N21°02'23"W	18.07'
PP	N69°53'01"E	30.00'
QQ	N56°04'13"E	115.47'
RR	N56°04'13"E	1.03'
SS	N21°02'23"W	83.36'
TT	S21°02'23"E	83.37'
UU	N55°23'59"E	1.03'
VV	ARC	L = 63.95'
	CHORD	S62°48'25"E 63.79'
WW	ARC	L = 30.82'
	CHORD	S15°22'45"E 30.80'

BM#148 CONCRETE MONUMENT W/ ALUMINUM CAP STA. 854+45.94, 247.60 RT. ELEV. 653.22



SCALE: 1"=50'

KY 313
 STA. 845+00 TO STA. 858+00

RIGHT OF WAY SUMMARY

REVISED 9/18/2015

COUNTY OF	ITEM NO.	SHEET NO.
MEADE	04-297.65	R22

FILE NAME: Y:\NYTC 2007\207-139 MEADE 4-297-65 SEC 5 DELIVERABLES\SENT TO TRANSPORTATION CABINET\TP440 REVISION\RO2200RW.DGN
 USER: bmoattingly
 DATE PLOTTED: September 11, 2015
 E-SHEET NAME: RO2200RW
 MicroStation v8.11.7.443

PARCEL NO.	OWNER(S)	TOTAL AREA OF TRACT		PERMANENT RW ACQUIRED		EASEMENTS		AREA SEVERED				EXCESS PURCHASED		PORTION REMAINING		SEWER SYSTEM TYPE	SEWER SYSTEM AFFECTED BY PROJECT		BUILDINGS ACQUIRED NUMBER					SOURCE OF TITLE	REMARKS*
		ACRES	SQ. FT.	ACRES	SQ. FT.	PERMANENT SQ. FT.	TEMPORARY SQ. FT.	LEFT		RIGHT		ACRES	SQ. FT.	ACRES	SQ. FT.		YES	NO	C	R	F	S			
								ACRES	SQ. FT.	ACRES	SQ. FT.														
401	WILLIAM B. MILES & JULIA A. MILES, (HIS WIFE)	16.947	(M)	0.629			2,978			16.318				16.318	4		X						DB 157 PG 215	R7, R23	
402	GAYE AEBERSOLD CHAPMAN, CAROL AEBERSOLD WHELEN, & JOHN AEBERSOLD	5.517	(M)	2.608		1,358	1,928			2.909				2.909	1	X			1				DB 119 PG 519, WB W, PG 670	R7, R23	
405	JEFF WATTS	2.02	(D)				1,825			2.02				2.02	1		X						DB 581 PG 575, DB 581 PG 577	R7, R19, R21, R23	
408	STEVEN M. CARNELL & LISA A. CARNELL, (HIS WIFE) (LANDLOCKED)	1.576	(M)	1.072						0.504				0.504	1	X			1	1	1		DB 511 PG 384	LANDLOCKED (0.504 ac), R7, R21, R23	
409	ALVIN R. NALL & ROMONA J. NALL, (HIS WIFE)	122	(D)	1,112					120,164	0.724				120.888	4		X						DB 124 PG 290	R7, R19, R21, R23	
410	ELTON YOUART	41,748	(D)	2,623		32,372	23,722		39,125					39.125	4		X						DB 584 PG 6	R9, R19, R21, R23	
411	COLEMAN & SMITH: BRANDENBURG & DOE RUN MILLS, INC.	331.455	(M)	3,576		27,507	932			327.871				327.879	1		X						DB 374 PG 10, DB 374 PG 19, DB 374 PG 38	R7, R11, R11A, R21, R23	
412	MELISSA CUMMINGS PICKETT & MICHAEL L. PICKETT, (WIFE AND HUSBAND)	21.611	(D)	2,219		8,242	10,214		19,392					19.392	4		X						DB 538 PG 319	R11, R11A, R24	
413	NEVITT B. POWELL & KATHLEEN POWELL, (HIS WIFE)			6675	(M)	6675								0	4		X						DB 85 PG 571	TOTAL TAKE (6675 sq ft), R11, R11A, R24	
414	REBECCA ANN O'CONNOR			6424	(M)	6424								0	4	X		1					DB 560 PG 542	TOTAL TAKE (6424 sq ft), R11, R11A, R24	
415	MCGEEHE HUMPHREY & DAVIS LLC, XE8 SERIES	2.51	(D)	1,868					0.642					0.642	1	X			1		1		DB 576 PG 269	R11, R24	
417	JASON C. MCGAHA & DONNA L. MCGAHA, (HIS WIFE)	1.735	(M)	1,290			1000		0.445					0.445	1	X							DB 447 PG 60, PC 5 PG 178	R11, R24	
418	WENDE LEE	2.614	(M)	1,860					0.754					0.754	1	X							DB 431 PG 90, DB 590 PG 390	R11, R24	
419	LARRY D. ERWIN & DONNA O. ERWIN, (HIS WIFE)	0.808	(P)	0,008			6,375			0.8001				0.8001	1		X						DB 462 PG 589	R11, R13, R24	
420	JOE SMITH & DEBBIE SMITH, (HUSBAND AND WIFE)	0.792	(D)	0,183			3,295			0.6093				0.6093	1		X						DB 454 PG 367	R11, R24	
421	GORDON T. JEWETT & DIANA L. JEWETT, (HIS WIFE)	5.94	(D)	0,344			5,748			5.596				5.596	1		X						DB 207 PG 12	R13, R24	
423	CHRISTY THARPE, (MARRIED)			24768	(M)	24768								0	1		X		1	1			DB 491 PG 622	TOTAL TAKE (24768 sq ft), R13, R24	
424	MELISSA CUMMINGS, (MARRIED)	54.033	(D)	1,696		126,924	1,600		52.337					52.337	4		X						DB 507 PG 349	R9, R11, R13, R23, R24--TRACT 2 DEED	
425	JAMES R. BROWN & LOU-ANN BROWN, (HUSBAND AND WIFE)	1.172	(M)	1,172						1.172				0	1	X			1	1			DB 271 PG 269	TOTAL TAKE (1.172 ac), R13, R24	
426	BETTYE J BROWN, (WIDOW)	1.305	(M)	1,305						1.305				1.305	4		X						DB 136 PG 536	TOTAL TAKE (1.305 ac), R13, R15, R15A, R24	
427	BETTYE J BROWN, (WIDOW) (LANDLOCKED)	3.715	(M)	3,447					0.268					0.268	1	X	X		1	1			DB 136 PG 536	LANDLOCKED (0.268 ac), R13, R15, R15A, R24	
428	GAYE AEBERSOLD CHAPMAN, CAROL AEBERSOLD WHELEN, & JOHN AEBERSOLD	9.825	(M)	0,382		0	5,790			9.443				9.443	1		X						DB 134 PG 407, WB W, PG 670	R13, R15, R17, R24	
429	GAYE AEBERSOLD CHAPMAN, CAROL AEBERSOLD WHELEN, & JOHN AEBERSOLD	2.16	(D)	1,596					0.564					0.564	4		X						DB 480 PG 150, WB W, PG 670	R15, R24	
430	GARRY GENE THOMPSON	45.378	(D)	0,012						45.366				45.366	1		X						DB 461 PG 435	R13, R15, R24	
431	CHRIS DENNER & RITA ANN DENNER, (HUSBAND AND WIFE)	1.972	(D)	1,082		965			0.890					0.890	1	X			1				DB 484 PG 494	R15, R24	
432	TROY SEELYE, (SINGLE)	2.936	(D)	1,152		18,560	14,508		1.784					1.784	4		X						DB 481 PG 461	R15, R24	
433	PAUL B. HOBBS & ELIZABETH C. HOBBS, (HIS WIFE)	2.000	(D)	0,722		7,999	1,743		1.278					1.278	1		X						DB 372 PG 129	R15, R24	
434	COREY B. BENAVIDEZ, (SINGLE) AND RONALD MORENO & LORETTA MORENO, (HUSBAND AND WIFE)	1.003	(M)	0,396			6,931		0.607					0.607	1	X			1	1			DB 375 PG 116	R15, R24	
435	JOHN WHITE AEBERSOLD	4.849	(D)	0,668		13,698	9,078			4.181				4.181	1		X						DB 381 PG 242, DB 609 PG 622	R15, R17, R24	
436	CHARLES A. JENKINS & MARGARET L. JENKINS, (HUSBAND AND WIFE) AND EDDIE M. SIPES & ELIZABETH D. SIPES, (HUSBAND AND WIFE)	0.931	(D)	0,408			3,995		0.523					0.523	4		X						DB 426 PG 463	R17, R24	
437	STEVEN W. WARDRIP & VADA L. WARDRIP, (HIS WIFE)	1.821	(M)	0,541			5,992		1.280					1.280	4		X				1		DB 242 PG 165	R17, R24	
438	WEST HOLSEN ESTATE	3.044	(M)	0,521			6,883		2.523					2.523	1		X		1	1			DB 86 PG 34, DB 88 PG 370, DB 107 PG 304	R17, R24	
439	WILLIAM E. JUPIN & MARY C. JUPIN, (HIS WIFE)	2.753	(M)	0,742		11,488	4,157		2.011					2.011	1	X			3				DB 105 PG 491	R17, R24	
440	ALTON R. WORLEY & WILLIAM E. WORLEY, JR.	1.332	(M)	0,570		8522			0.762					0.762	1	X			2				DB 158 PG 41, AD 570 PG 56	R17, R24	
441	MELISSA CUMMINGS (MARRIED) ET AL	0.486	(D)	0,255			1,834		0.231					0.231									DB 507 PG 349	R11, R11A, R24	
445	BRUCE K. & TERRY L. ORY, (HUSBAND & WIFE)	1.128	(D)	0,528			1,935			0.600				0.600	1		X			1			DB 385 PG 402	R7, R23	
446	BRUCE E. MCNEMAR & DAWNA M. MCNEMAR, (HUSBAND AND WIFE)	11.7	(D)	4,809		25,384	7,818		6.704					6.891	1		X						DB 488 PG 62	R9, R19, R21, R23	
448	HAROLD WEILAGE, (SINGLE)	2.772	(D)			3,186			2.772					2.772	4		X						DB 481 PG 20	R15, R24	
450	DONNY & TERESA BLANKENSHIP	0.754	(M)	0,002			4,239		0.752					0.752	1		X						DB 605 PG 591	R17, R24	
451	HERBERT & MARGARET THOMPSON	20.0	(M)	0,087			2,127			19.913				19.913	1		X						DB 100 PG 467	R15, R24	
452	GABE CHAPMAN, GABERY CHAPMAN, CARESA CHAPMAN, & AUSTIN CHAPMAN	23.788	(D)	0,130			2,621			23.658				23.658	1		X						DB 609 PG 20, PARCEL 5 PC5 SHT86	R13, R24	
453	DONNY & TERESA BLANKENSHIP	4.001	(D)	0,485			1,002			3.516				3.516	1		X						DB 605 PG 596, LOT 1B PCT 5 SHT267	R15, R15A, R24	
454	GAYE AEBERSOLD CHAPMAN, CAROL AEBERSOLD WHELEN, & JOHN AEBERSOLD	14.766	(M)	0,607						14.159				14.159	1		X						DB 125 PG 282, WB W, PG 670	R15, R15A, R17, R17A, R24	

NOTE: PERMANENT R/W ACQUIRED + AREA SEVERED = TOTAL AREA OF TRACT.
 AREA OBTAINED BY:
 (D) - DEED
 (M) - MEASURED
 (P) - PLAT
 TYPE SEWER SYSTEM:
 1. PRIVATE - INDIVIDUAL
 2. PRIVATE - MULTI PARTY
 3. PUBLIC
 4. NONE
 5. NOT APPLICABLE
 BUILDINGS ACQUIRED CODE:
 C - COMMERCIAL
 R - RESIDENTIAL
 F - FARM
 S - STORAGE
 * INCLUDES HAZARDOUS WASTE (UST - UNDERGROUND STORAGE TANKS)

THIS PROJECT IS A PARTIALLY CONTROLLED ACCESS HIGHWAY. ACCESS SHALL BE ALLOWED ONLY WHERE SPECIFICALLY SHOWN ON PLANS. STA. 742+00 TO STA. 832+00 MINIMUM SPACING IS 1200 FEET. STA. 832+00 TO STA. 854+75 MINIMUM SPACING IS 600 FEET.

RIGHT OF WAY SUMMARY

REVISED 9/18/2015

COUNTY OF	ITEM NO.	SHEET NO.
MEADE	04-297.65	R22

FILE NAME: Y:\NYTC 2007\207-139 MEADE 4-297-65 SEC 5 DELIVERABLES\SENT TO TRANSPORTATION CABINET\TP440 REVISION\RO2200RW.DGN
 USER: bmoattingly
 DATE PLOTTED: September 11, 2015
 E-SHEET NAME: RO2200RW
 MicroStation v8.11.7.443

PARCEL NO.	OWNER(S)	TOTAL AREA OF TRACT		PERMANENT RW ACQUIRED		EASEMENTS		AREA SEVERED				EXCESS PURCHASED		PORTION REMAINING		SEWER SYSTEM TYPE	SEWER SYSTEM AFFECTED BY PROJECT		BUILDINGS ACQUIRED NUMBER					SOURCE OF TITLE	REMARKS*
		ACRES	SQ. FT.	ACRES	SQ. FT.	PERMANENT SQ. FT.	TEMPORARY SQ. FT.	LEFT ACRES	LEFT SQ. FT.	RIGHT ACRES	RIGHT SQ. FT.	ACRES	SQ. FT.	ACRES	SQ. FT.		YES	NO	C	R	F	S			
401	WILLIAM B. MILES & JULIA A. MILES, (HIS WIFE)	16.947	(M)	0.629			2,978			16.318				16.318		4		X						DB 157 PG 215	R7, R23
402	GAYE AEBERSOLD CHAPMAN, CAROL AEBERSOLD WHELEN, & JOHN AEBERSOLD	5.517	(M)	2.608		1,358	1,928			2.909				2.909		1	X			1				DB 119 PG 519, WB W, PG 670	R7, R23
405	JEFF WATTS	2.02	(D)				1,825			2.02				2.02		1		X						DB 581 PG 575, DB 581 PG 577	R7, R19, R21, R23
408	STEVEN M. CARNELL & LISA A. CARNELL, (HIS WIFE) (LANDLOCKED)	1.576	(M)	1.072						0.504				0.504		1	X			1	1	1		DB 511 PG 384	LANDLOCKED (0.504 ac), R7, R21, R23
409	ALVIN R. NALL & ROMONA J. NALL, (HIS WIFE)	122	(D)	1,112						120.164				0.724		4		X						DB 124 PG 290	R7, R19, R21, R23
410	ELTON YOUART	41,748	(D)	2,623		32,372	23,722		39.125					39.125		4		X						DB 584 PG 6	R9, R19, R21, R23
411	COLEMAN & SMITH: BRANDENBURG & DOE RUN MILLS, INC.	331.455	(M)	3,576		27,507	932			327.871				327.879		1		X						DB 374 PG 10, DB 374 PG 19, DB 374 PG 38	R7, R11, R11A, R21, R23
412	MELISSA CUMMINGS PICKETT & MICHAEL L. PICKETT, (WIFE AND HUSBAND)	21.611	(D)	2,219		8,242	10,214		19.392					19.392		4		X						DB 538 PG 319	R11, R11A, R24
413	NEVITT B. POWELL & KATHLEEN POWELL, (HIS WIFE)			6675	(M)	6675								0		4		X						DB 85 PG 571	TOTAL TAKE (6675 sq ft), R11, R11A, R24
414	REBECCA ANN O'CONNOR			6424	(M)	6424								0		4	X			1				DB 560 PG 542	TOTAL TAKE (6424 sq ft), R11, R11A, R24
415	MCGEEHE HUMPHREY & DAVIS LLC, XE8 SERIES	2.51	(D)	1,868					0.642					0.642		1	X				1	1		DB 576 PG 269	R11, R24
417	JASON C. MCGAHA & DONNA L. MCGAHA, (HIS WIFE)	1.735	(M)	1,290			1000		0.445					0.445		1	X							DB 447 PG 60, PC 5 PG 178	R11, R24
418	WENDE LEE	2.614	(M)	1,860					0.754					0.754		1	X							DB 431 PG 90, DB 590 PG 390	R11, R24
419	LARRY D. ERWIN & DONNA O. ERWIN, (HIS WIFE)	0.808	(P)	0,008			6,375			0.8001				0.8001		1		X						DB 462 PG 589	R11, R13, R24
420	JOE SMITH & DEBBIE SMITH, (HUSBAND AND WIFE)	0.792	(D)	0,183			3,295			0.6093				0.6093		1		X						DB 454 PG 367	R11, R24
421	GORDON T. JEWETT & DIANA L. JEWETT, (HIS WIFE)	5.94	(D)	0,344			5,748			5.596				5.596		1		X						DB 207 PG 12	R13, R24
423	CHRISTY THARPE, (MARRIED)			24768	(M)	24768								0		1		X			1	1		DB 491 PG 622	TOTAL TAKE (24768 sq ft), R13, R24
424	MELISSA CUMMINGS, (MARRIED)	54.033	(D)	1,696		126,924	1,600		52.337					52.337		4		X						DB 507 PG 349	R9, R11, R13, R23, R24--TRACT 2 DEED
425	JAMES R. BROWN & LOU-ANN BROWN, (HUSBAND AND WIFE)	1.172	(M)	1,172						1.172				0		1	X				1	1		DB 271 PG 269	TOTAL TAKE (1.172 ac), R13, R24
426	BETTYE J BROWN, (WIDOW)	1.305	(M)	1,305						1.305				1.305		4		X						DB 136 PG 536	TOTAL TAKE (1.305 ac), R13, R15, R15A, R24
427	BETTYE J BROWN, (WIDOW) (LANDLOCKED)	3.715	(M)	3,447					0.268					0.268		1	X	X			1	1		DB 136 PG 536	LANDLOCKED (0.268 ac), R13, R15, R15A, R24
428	GAYE AEBERSOLD CHAPMAN, CAROL AEBERSOLD WHELEN, & JOHN AEBERSOLD	9.825	(M)	0,382		0	5,790			9.443				9.443		1		X						DB 134 PG 407, WB W, PG 670	R13, R15, R17, R24
429	GAYE AEBERSOLD CHAPMAN, CAROL AEBERSOLD WHELEN, & JOHN AEBERSOLD	2.16	(D)	1,596					0.564					0.564		4		X						DB 480 PG 150, WB W, PG 670	R15, R24
430	GARRY GENE THOMPSON	45.378	(D)	0,012						45.366				45.366		1		X						DB 461 PG 435	R13, R15, R24
431	CHRIS DENNER & RITA ANN DENNER, (HUSBAND AND WIFE)	1.972	(D)	1,082		965			0.890					0.890		1	X				1			DB 484 PG 494	R15, R24
432	TROY SEELYE, (SINGLE)	2.936	(D)	1,152		18,560	14,508		1.784					1.784		4		X						DB 481 PG 461	R15, R24
433	PAUL B. HOBBS & ELIZABETH C. HOBBS, (HIS WIFE)	2.000	(D)	0,722		7,999	1,743		1.278					1.278		1		X						DB 372 PG 129	R15, R24
434	COREY B. BENAVIDEZ, (SINGLE) AND RONALD MORENO & LORETTA MORENO, (HUSBAND AND WIFE)	1.003	(M)	0,396			6,931		0.607					0.607		1	X				1	1		DB 375 PG 116	R15, R24
435	JOHN WHITE AEBERSOLD	4.849	(D)	0,668		13,698	9,078			4.181				4.181		1		X						DB 381 PG 242, DB 609 PG 622	R15, R17, R24
436	CHARLES A. JENKINS & MARGARET L. JENKINS, (HUSBAND AND WIFE) AND EDDIE M. SIPES & ELIZABETH D. SIPES, (HUSBAND AND WIFE)	0.931	(D)	0,408			3,995		0.523					0.523		4		X						DB 426 PG 463	R17, R24
437	STEVEN W. WARDRIP & VADA L. WARDRIP, (HIS WIFE)	1.821	(M)	0,541			5,992		1.280					1.280		4		X				1		DB 242 PG 165	R17, R24
438	WEST HOLSEN ESTATE	3.044	(M)	0,521			6,883		2.523					2.523		1		X			1	1		DB 86 PG 34, DB 88 PG 370, DB 107 PG 304	R17, R24
439	WILLIAM E. JUPIN & MARY C. JUPIN, (HIS WIFE)	2.753	(M)	0,742		11,488	4,157		2.011					2.011		1	X				3			DB 105 PG 491	R17, R24
440	ALTON R. WORLEY & WILLIAM E. WORLEY, JR.	1.332	(M)	0,570		8522			0.762					0.762		1		X			2			DB 158 PG 41, AD 570 PG 56	R17, R24
441	MELISSA CUMMINGS (MARRIED) ET AL	0.486	(D)	0,255			1,834		0.231					0.231				X						DB 507 PG 349	R11, R11A, R24
445	BRUCE K. & TERRY L. ORY, (HUSBAND & WIFE)	1.128	(D)	0,528			1,935		0.600					0.600		1		X				1		DB 385 PG 402	R7, R23
446	BRUCE E. MCNEMAR & DAWNA M. MCNEMAR, (HUSBAND AND WIFE)	11.7	(D)	4,809		25,384	7,818		6.704					6.891		1		X						DB 488 PG 62	R9, R19, R21, R23
448	HAROLD WEILAGE, (SINGLE)	2.772	(D)			3,186			2.772					2.772		4		X						DB 481 PG 20	R15, R24
450	DONNY & TERESA BLANKENSHIP	0.754	(M)	0,002			4,239		0.752					0.752		1		X						DB 605 PG 591	R17, R24
451	HERBERT & MARGARET THOMPSON	20.0	(M)	0,087			2,127		19.913					19.913		1		X						DB 100 PG 467	R15, R24
452	GABE CHAPMAN, GABERY CHAPMAN, CARESA CHAPMAN, & AUSTIN CHAPMAN	23.788	(D)	0,130			2,621		23.658					23.658		1		X						DB 609 PG 20, PARCEL 5 PC5 SHT86	R13, R24
453	DONNY & TERESA BLANKENSHIP	4.001	(D)	0,485			1,002		3.516					3.516		1		X						DB 605 PG 596, LOT 1B PCT 5 SHT267	R15, R15A, R24
454	GAYE AEBERSOLD CHAPMAN, CAROL AEBERSOLD WHELEN, & JOHN AEBERSOLD	14.766	(M)	0,607					14.159					14.159		1		X						DB 125 PG 282, WB W, PG 670	R15, R15A, R17, R17A, R24

NOTE: PERMANENT R/W ACQUIRED + AREA SEVERED = TOTAL AREA OF TRACT.
 PARCEL NUMBERS 442 - 444 NOT USED.

AREA OBTAINED BY
 (D) - DEED
 (M) - MEASURED
 (P) - PLAT

TYPE SEWER SYSTEM
 1. PRIVATE - INDIVIDUAL
 2. PRIVATE - MULTI PARTY
 3. PUBLIC
 4. NONE
 5. NOT APPLICABLE

BUILDINGS ACQUIRED CODE
 C - COMMERCIAL
 R - RESIDENTIAL
 F - FARM
 S - STORAGE
 * INCLUDES HAZARDOUS WASTE (JUST - UNDERGROUND STORAGE TANKS)

THIS PROJECT IS A PARTIALLY CONTROLLED ACCESS HIGHWAY. ACCESS SHALL BE ALLOWED ONLY WHERE SPECIFICALLY SHOWN ON PLANS. STA. 742+00 TO STA. 832+00 MINIMUM SPACING IS 1200 FEET. STA. 832+00 TO STA. 854+75 MINIMUM SPACING IS 600 FEET.

RIGHT OF WAY SUMMARY SHEET

FILE NAME: Y:\KYTC\2007\207-139 MEADE 4-297-65 SEC 5 MASTER PLAN SET\06-STRIP MAPS\STRIP MAP 2.DGN

USER: bmattingly
DATE PLOTTED: September 15, 2015

E-SHEET NAME: R02400RW

MicroStation v8.11.7.443
REVISED 9/18/2015

MATCHLINE STA. 800+00



(P 413) NEVITT B. POWELL & KATHLEEN POWELL (HIS WIFE)	(P 419) LARRY D. BROWN & DONNA J. BROWN (HIS WIFE)	(P 426) BETTYE J. BROWN (WIDOW)
(P 414) REBECCA ANN O'CONNOR	(P 420) JOE SMITH & DEBBIE SMITH (HUSBAND AND WIFE)	(P 427) BETTYE J. BROWN (WIDOW) (LANDLOCKED)
(P 415) MCGHEE HUMPHREY & DAVIS (C/O XEB SERIES)	(P 421) GORDON T. JEWETT & DIANA L. JEWETT (HIS WIFE)	(P 428) GAYE AEBERSOLD CHAPMAN, CAROL AEBERSOLD WHELEN, & JOHN AEBERSOLD
(P 417) JASON C. MCGAHA & DONNA MCGAHA (HIS WIFE)	(P 423) CHRISTY THAYER (MARRIED)	
(P 418) KWENDE LEE	(P 425) JAMES R. BROWN & LOU-ANN BROWN (HUSBAND AND WIFE)	

(P 429) GAYE AEBERSOLD CHAPMAN, CAROL AEBERSOLD WHELEN, & JOHN AEBERSOLD	(P 435) JOHN WHITE AEBERSOLD	(P 439) WILLIAM E. JUPIN & MARY C. JUPIN (HIS WIFE)
(P 431) CHRIS DENNER & RITA ANN DENNER (HUSBAND AND WIFE)	(P 436) CHARLES A. JENKINS & MARGARET L. JENKINS (HUSBAND AND WIFE)	(P 440) ALTON R. WORLEY & WILLIAM E. WORLEY, JR.
(P 432) TRACY SEELYE (SINGLE)	(P 437) EDDIE M. SIPES & ELIZABETH D. SIPES (HUSBAND AND WIFE)	(P 441) MELISSA CUMMINGS (MARRIED) ET AL
(P 433) PAUL B. HOBBS & ELIZABETH C. HOBBS (HIS WIFE)	(P 438) STEVEN W. WARDRIP & VADA L. WARDRIP (HIS WIFE) EXCESS PURCHASE	(P 453) DONNY & TERESA BLANKENSHIP
(P 434) COREY B. BENAVIDEZ (SINGLE) ROMANO MORENO & LORETTA MORENO (HUSBAND AND WIFE)	(P 439) WEST HOLSEN ESTATE	(P 454) GAYE AEBERSOLD CHAPMAN, CAROL AEBERSOLD WHELEN, & JOHN AEBERSOLD

THIS PROJECT IS A PARTIAL CONTROLLED ACCESS HIGHWAY. ACCESS SHALL BE ALLOWED ONLY WHERE SPECIFICALLY SHOWN ON PLANS.
STA. 742+00 TO STA. 832+00 MINIMUM SPACING IS 1200 FEET
STA. 832+00 TO STA. 854+75 MINIMUM SPACING IS 600 FEET



RIGHT OF WAY STRIP MAP
STA. 800+00 TO STA. 855+50

EROSION CONTROL

REVISED 9/18/2015

COUNTY OF	ITEM NO.	SHEET NO.
MEADE	04-297.65	R55

DISTURBED DRAINAGE AREAS		
SECTION	DISTURBED AREA (ACRES)	MAXIMUM SEDIMENT VOLUME (CU FT)
DDA 230	0.26	936
DDA 235	0.32	1152
DDA 240	1.24	4464
DDA 245	0.80	2880
DDA 250	0.81	2916
DDA 255	0.29	1044
DDA 260	0.52	1872
DDA 265	0.37	1332
DDA 270	1.95	7020
DDA 275	1.79	6444
DDA 280	0.12	432

BEGIN FRONTAGE ROAD STA. 40+92

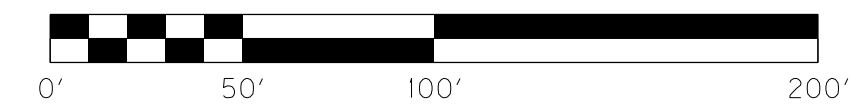
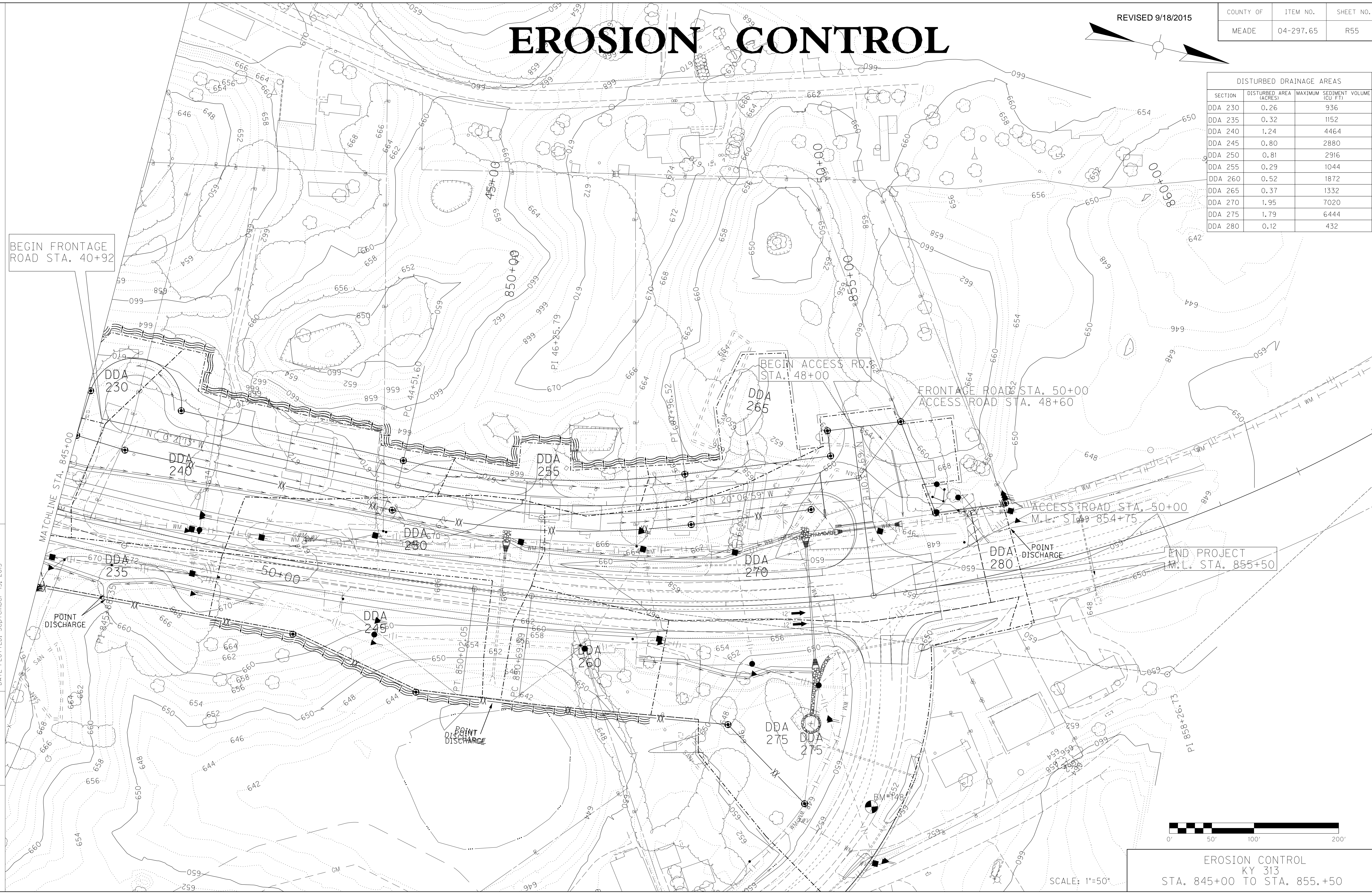
BEGIN ACCESS RD. STA. 48+00

FRONTAGE ROAD STA. 50+00
ACCESS ROAD STA. 48+60

ACCESS ROAD STA. 50+00
M.L. STA. 854+75

END PROJECT
M.L. STA. 855+50

FILE NAME: Y:\KYTC\2007\207-139 MEADE 4-297-65 SEC 5\DELIVERABLES\SENT TO TRANSPORTATION CABINET\CONST. REV. #\DGN\R05500EC.DGN
 USER: bmoattingly
 DATE PLOTTED: September 15, 2015
 E-SHEET NAME: R05500EC
 MicroStation v8.11.7.443



SCALE: 1"=50'

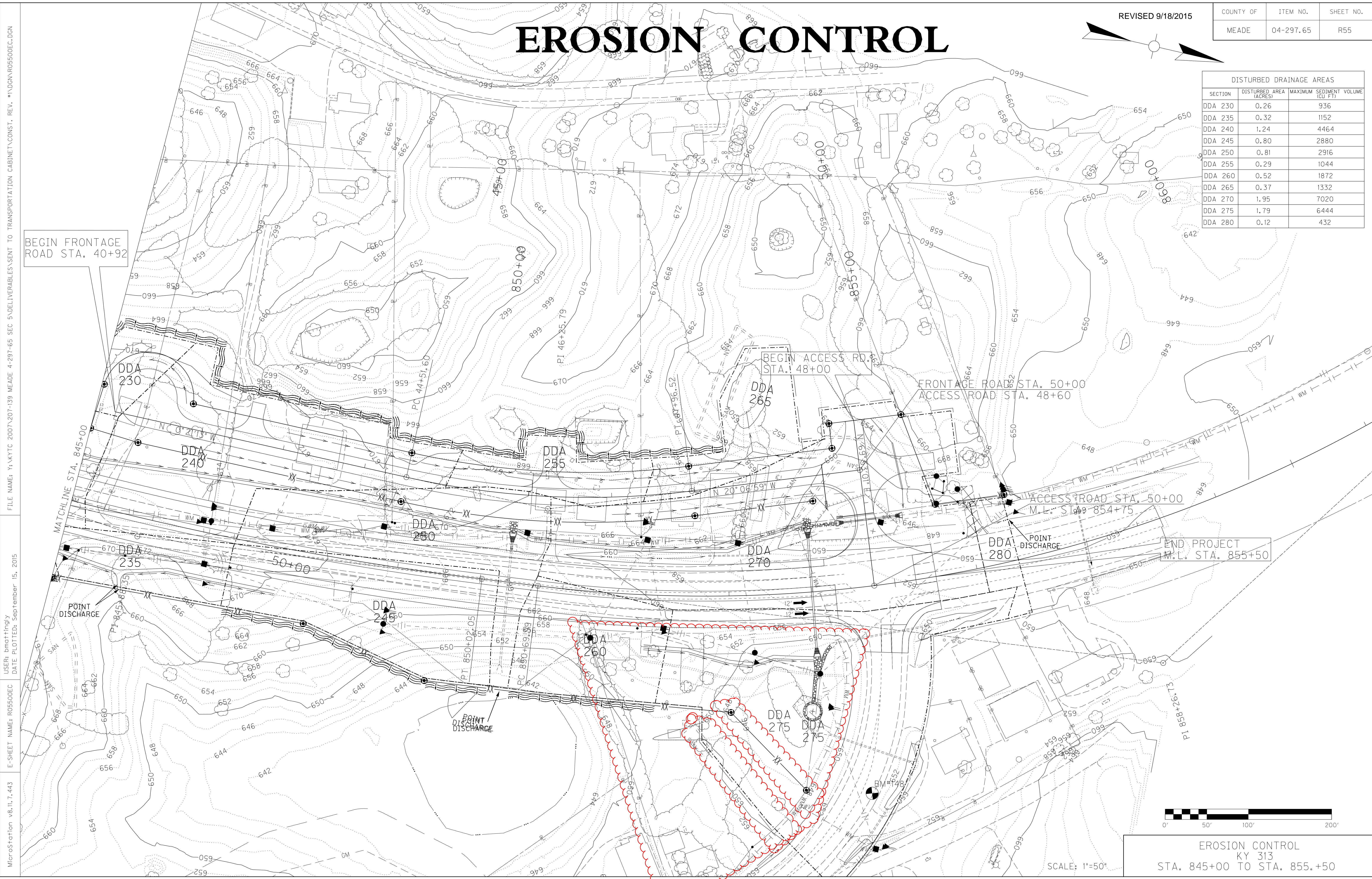
EROSION CONTROL
 KY 313
 STA. 845+00 TO STA. 855.+50

EROSION CONTROL

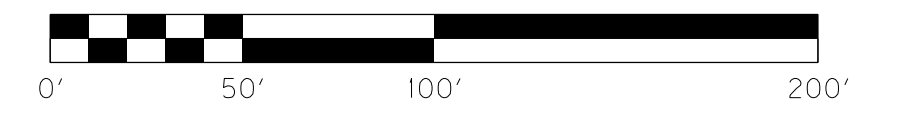
REVISED 9/18/2015

COUNTY OF	ITEM NO.	SHEET NO.
MEADE	04-297.65	R55

DISTURBED DRAINAGE AREAS		
SECTION	DISTURBED AREA (ACRES)	MAXIMUM SEDIMENT VOLUME (CU FT)
DDA 230	0.26	936
DDA 235	0.32	1152
DDA 240	1.24	4464
DDA 245	0.80	2880
DDA 250	0.81	2916
DDA 255	0.29	1044
DDA 260	0.52	1872
DDA 265	0.37	1332
DDA 270	1.95	7020
DDA 275	1.79	6444
DDA 280	0.12	432



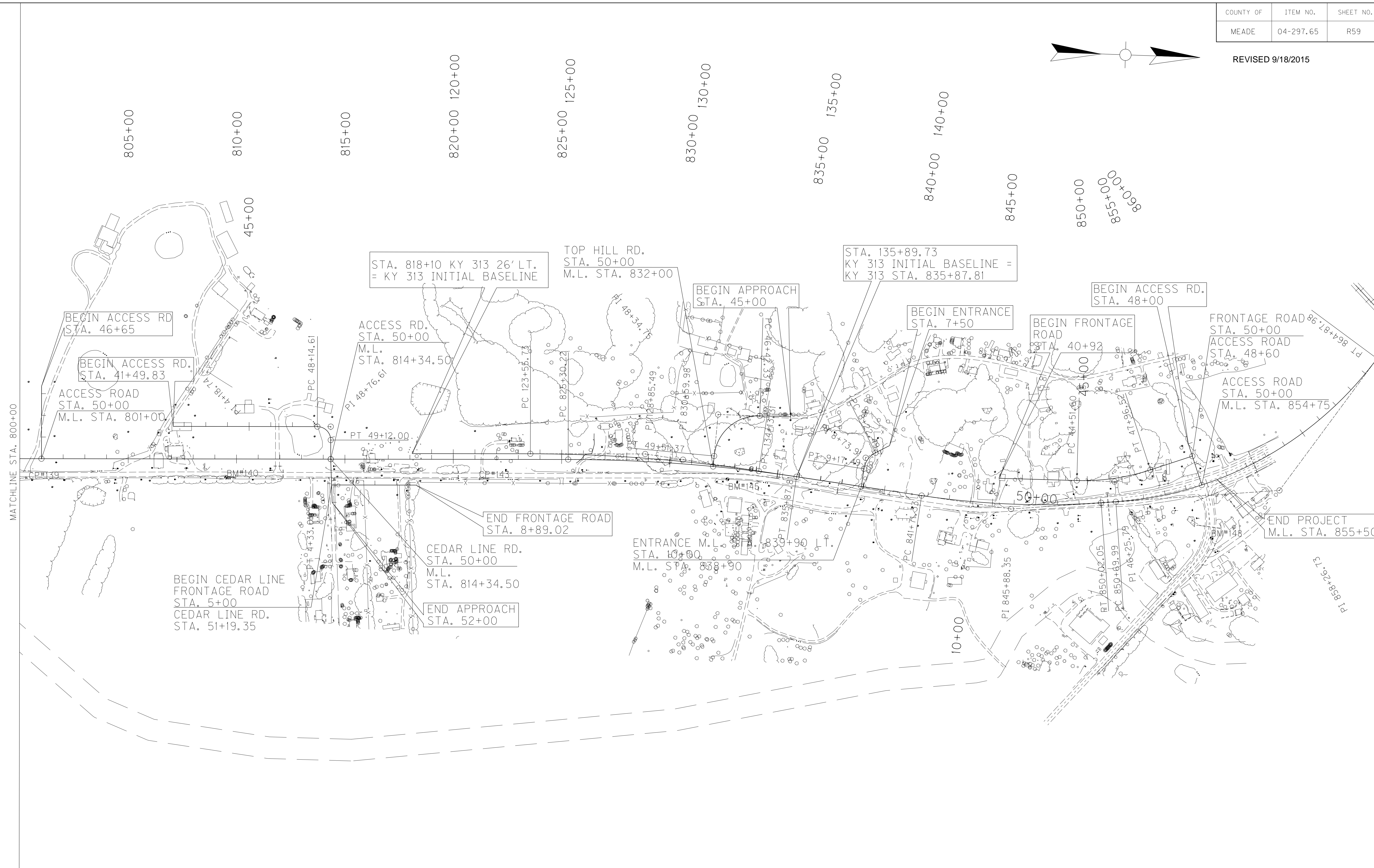
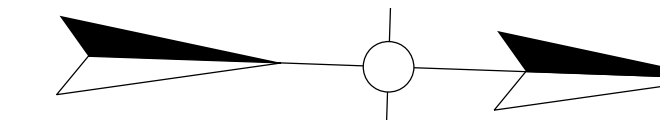
FILE NAME: Y:\KYTC\2007\207-139 MEADE 4-297-65 SEC 5\DELIVERABLES\TO TRANSPORTATION CABINET\CONST. REV. #\DGN\R05500EC.DGN
 USER: bmoattingly
 DATE PLOTTED: September 15, 2015
 E-SHEET NAME: R05500EC
 MicroStation v8.11.7.443



EROSION CONTROL
 KY 313
 STA. 845+00 TO STA. 855.+50
 SCALE: 1"=50'

COUNTY OF	ITEM NO.	SHEET NO.
MEADE	04-297.65	R59

REVISED 9/18/2015

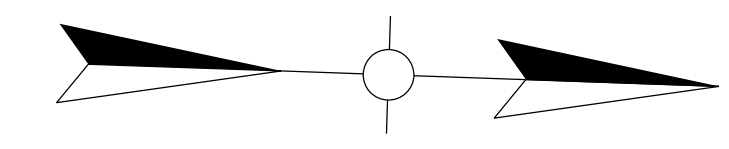


COORDINATE CONTROL SHEET
 STA. 800+00 TO STA. 855+50

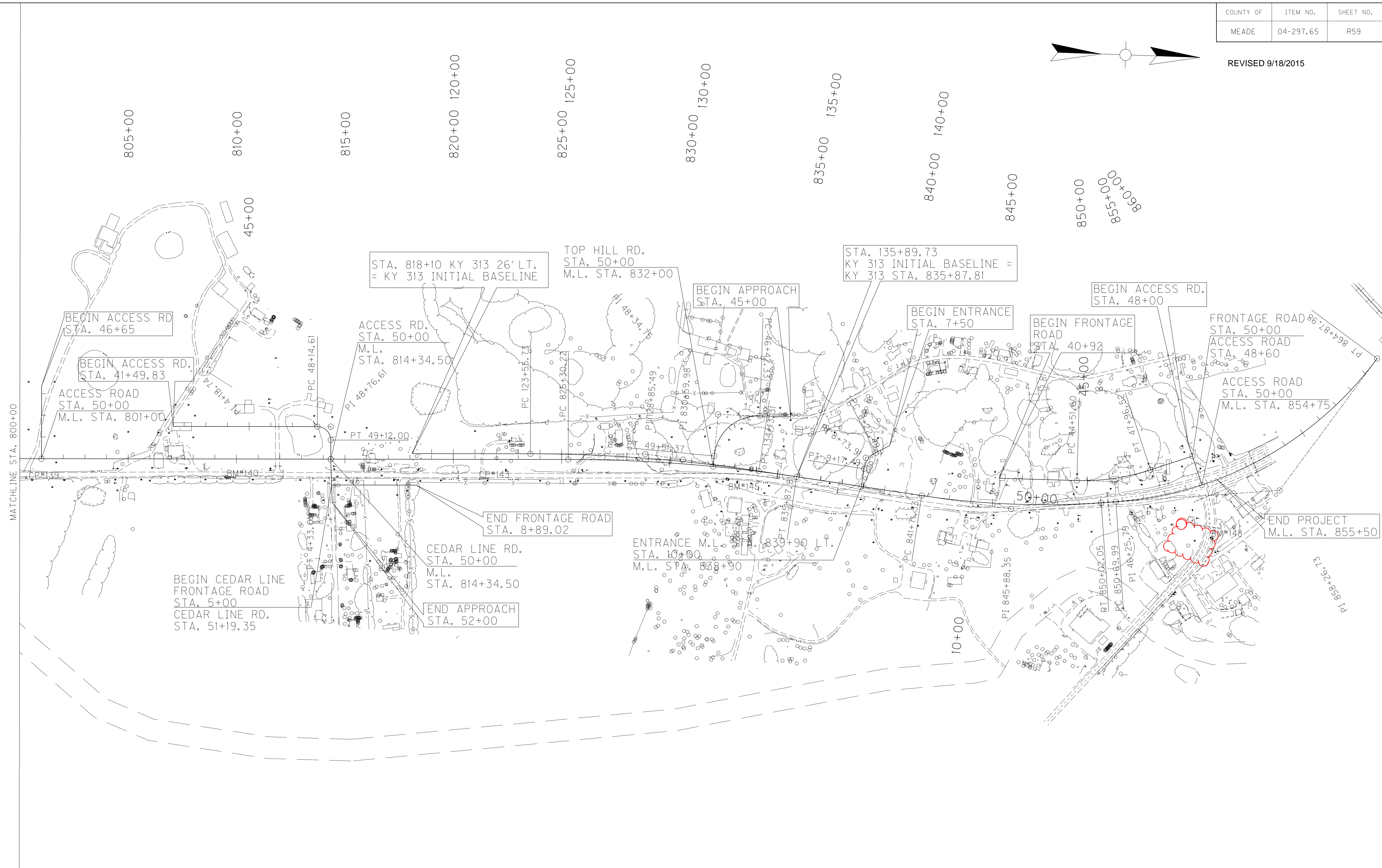
MicroStation v8.11.7.443
 E-SHEET NAME: R05900CC
 USER: bmoatt@ndly
 DATE PLOTTED: September 15, 2015
 FILE NAME: Y:\KYTC\2007\207-139 MEADE 4-297-65 SEC 5\DELIVERABLES\SENT TO TRANSPORTATION\CABINET\CONST. REV. #\DGN\R05900CC.DGN

COUNTY OF	ITEM NO.	SHEET NO.
MEADE	04-297.65	R59

REVISED 9/18/2015



FILE NAME: Y:\KYTC\2007\207-139 MEADE 4-297-65 SEC 5\DELIVERABLES\SENT TO TRANSPORTATION CABINET\CONST. REV. #\DGN\R05900CC.DGN
 USER: bmoat\hindy
 DATE PLOTTED: September 15, 2015
 E-SHEET NAME: R05900CC
 MicroStation v8.11.7.443



COORDINATE CONTROL SHEET
 STA. 800+00 TO STA. 855+50

FILE NAME: Y:\NYTC 2007\207-139 MEADE 4-297-65 SEC 5\DELIVERABLES\SENT TO TRANSPORTATION CABINET\CONSTR. REV. #INDONR06\00CC.DGN
 USER: bmoatt\mgly
 DATE PLOTTED: September 15, 2015
 E-SHEET NAME: R06100CC
 MicroStation v8.11.7.443

RIGHT OF WAY MONUMENT POINTS					RIGHT OF WAY MONUMENT POINTS					RIGHT OF WAY MONUMENT POINTS				
STATION and OFFSET	TYPE	DESCRIPTION	Project Coordinates		STATION and OFFSET	TYPE	DESCRIPTION	Project Coordinates		STATION and OFFSET	TYPE	DESCRIPTION	Project Coordinates	
			NORTH (Y)	EAST (X)				NORTH (Y)	EAST (X)				NORTH (Y)	EAST (X)
800+40.00, 135' LT.	1	R/W MONUMENT	2230183.83	1528300.39	840+00.00, 95' LT.	1	R/W MONUMENT	2234153.27	1528347.55	TOP HILL RD. 48+50.00, 65' RT.	3	R/W MONUMENT	2233324.69	1528182.60
801+50.00, 130' RT.	1	R/W MONUMENT	2230302.63	1528561.56	840+50.00, 130' RT.	1	R/W MONUMENT	2234177.25	1528576.79	ACCESS RD. 854+75 LT. 48+00.00, 57.81' LT.	3	R/W MONUMENT	2235587.73	1528160.09
801+60.00, 105' LT.	1	R/W MONUMENT	2230304.77	1528326.36	841+75.00, 140' RT.	1	R/W MONUMENT	2234300.42	1528601.01	ACCESS RD. 854+75 LT. 48+00.00, 30' RT.	3	R/W MONUMENT	2235505.87	1528190.07
804+50.00, 145' RT.	1	R/W MONUMENT	2230602.96	1528566.52	843+00.00, 95' RT.	1	R/W MONUMENT	2234433.03	1528568.72	FRONTAGE RD. 854+75 LT. 40+73.05, 29.56' LT.	3	R/W MONUMENT	2234647.12	1528339.84
805+00.00, 125' LT.	1	R/W MONUMENT	2230643.91	1528295.00	843+00.00, 120' LT.	1	R/W MONUMENT	2234450.35	1528354.41	FRONTAGE RD. 854+75 LT. 41+82.63, 30' LT.	3	R/W MONUMENT	2234756.70	1528338.72
806+00.00, 100' RT.	1	R/W MONUMENT	2230751.37	1528516.53	845+00.00, 95' RT.	1	R/W MONUMENT	2234637.71	1528579.84	FRONTAGE RD. 854+75 LT. 44+51.60, 30' LT.	3	R/W MONUMENT	2235025.67	1528337.06
806+38.55, 121.31LT.	1	R/W MONUMENT	2230782.51	1528294.06	845+00.00, 90' LT.	1	R/W MONUMENT	2234642.88	1528394.91	FRONTAGE RD. 854+75 LT. 47+96.52, 30' LT.	3	R/W MONUMENT	2235353.29	1528277.90
806+72.31, 181.23' LT.	1	R/W MONUMENT	2230814.24	1528233.04	845+60.91, 87.04' LT.	1	R/W MONUMENT	2234702.30	1528399.06	FRONTAGE RD. 854+75 LT. 49+70.00, 30' LT.	3	R/W MONUMENT	2235516.18	1528218.24
806+87.72, 120' LT.	3	R/W MONUMENT	2230831.69	1528293.72	848+00.00, 85' RT.	1	R/W MONUMENT	2234944.60	1528566.32					
808+00.00, 100' LT.	1	R/W MONUMENT	2230944.58	1528309.96	848+91.87, 78.8' LT.	1	R/W MONUMENT	2235026.04	1528397.06					
813+60.00, 105' LT.	1	R/W MONUMENT	2231504.09	1528286.24	849+50.00, 130' RT.	1	R/W MONUMENT	2235101.63	1528600.30					
814+06.91, 100' RT.	1	R/W MONUMENT	2231557.84	1528489.55	852+58.17, 96.53' LT.	1	R/W MONUMENT	2235373.92	1528334.24					
814+65.00, 80' RT.	1	R/W MONUMENT	2231615.22	1528467.62	853+00.00, 140' RT.	1	R/W MONUMENT	2235469.48	1528554.71					
815+00.00, 125' LT.	1	R/W MONUMENT	2231643.35	1528261.57	853+77.62, 237.08' RT.	1	R/W MONUMENT	2235578.62	1528625.38					
816+00.00, 145' LT.	1	R/W MONUMENT	2231742.62	1528238.23	854+10.00, 108.8' LT.	1	R/W MONUMENT	2235508.02	1528285.13					
816+70.00, 75' RT.	1	R/W MONUMENT	2231819.94	1528455.77	855+64.46, 85.56' LT.	1	R/W MONUMENT	2235652.18	1528255.89					
817+45.00, 95' RT.	1	R/W MONUMENT	2231895.57	1528473.25	856+52.07, 80.13' LT.	1	R/W MONUMENT	2235729.98	1528225.97					
818+47.70, 99.45' RT.	1	R/W MONUMENT	2231998.36	1528474.26	ACCESS RD. 801+00 46+45.00, 60' RT.	3	R/W MONUMENT	2230176.47	1528080.51					
821+00.00, 130.83' LT.	1	R/W MONUMENT	2232242.82	1528235.67	ACCESS RD. 801+00 46+45.00, 60' LT.	3	R/W MONUMENT	2230296.41	1528076.50					
825+40.17, 101.2' RT.	1	R/W MONUMENT	2232690.36	1528452.87	ACCESS RD. 814+34.50 41+60.08, 100' LT.	3	R/W MONUMENT	2230857.58	1528162.79					
826+54.94, 191.24' LT.	1	R/W MONUMENT	2232798.79	1528157.75	ACCESS RD. 814+34.50 42+20.00, 100' LT.	3	R/W MONUMENT	2230917.46	1528160.78					
828+50.00, 208.77' LT.	1	R/W MONUMENT	2232999.26	1528139.75	ACCESS RD. 814+34.50 42+50.00, 50' LT.	3	R/W MONUMENT	2230949.12	1528209.75					
829+50.00, 88.7' RT.	1	R/W MONUMENT	2233094.65	1528439.00	ACCESS RD. 814+34.50 48+00.00, 50' LT.	3	R/W MONUMENT	2231498.81	1528191.36					
830+00.00, 100' RT.	1	R/W MONUMENT	2233143.64	1528451.72	ACCESS RD. 814+34.50 48+50.00, 65' LT.	3	R/W MONUMENT	2231582.17	1528193.71					
830+00.00, 120' LT.	1	R/W MONUMENT	2233150.74	1528231.83	CEDAR LINE RD. 51+65.39, 28.99' LT.	3	R/W MONUMENT	2231622.30	1528551.71					
831+50.00, 135' LT.	1	R/W MONUMENT	2233303.91	1528223.37	CEDAR FRONTAGE 8+02.79, 45' RT.	3	R/W MONUMENT	2231894.35	1528542.61					
831+75.00, 95' RT.	1	R/W MONUMENT	2233316.30	1528454.40	TOP HILL RD. 45+00.00, 15' RT.	3	R/W MONUMENT	2233695.86	1528104.38					
832+60.00, 130' LT.	1	R/W MONUMENT	2233415.44	1528235.19	TOP HILL RD. 45+00.00, 15' LT.	3	R/W MONUMENT	2233695.95	1528134.38					
834+50.00, 95' RT.	1	R/W MONUMENT	2233586.85	1528474.99	TOP HILL RD. 45+50.00, 40' RT.	3	R/W MONUMENT	2233645.78	1528079.53					
835+10.00, 130' LT.	1	R/W MONUMENT	2233669.03	1528257.07	TOP HILL RD. 45+50.00, 40' LT.	3	R/W MONUMENT	2233646.03	1528159.53					
838+00.00, 115' LT.	1	R/W MONUMENT	2233956.87	1528304.83	TOP HILL RD. 46+50.00, 40' RT.	3	R/W MONUMENT	2233544.29	1528080.02					
838+40.00, 94.85' RT.	1	R/W MONUMENT	2233972.64	1528517.88	TOP HILL RD. 47+65.00, 60' RT.	3	R/W MONUMENT	2233404.26	1528106.32					
838+40.00, 145' RT.	1	R/W MONUMENT	2233966.91	1528567.70	TOP HILL RD. 47+50.00, 40' LT.	3	R/W MONUMENT	2233471.04	1528182.31					
838+45.00, 101.01' LT.	1	R/W MONUMENT	2233999.98	1528323.87										
839+60.00, 94.40' RT.	1	R/W MONUMENT	2234091.90	1528531.14										
839+60.00, 145.00' RT.	1	R/W MONUMENT	2234086.12	1528581.41										
840+00.00, 94.25' RT.	1	R/W MONUMENT	2234131.66	1528535.56										

QUANTITY SUMMARY	
DESCRIPTION	QTY.
ROW MONUMENT TYPE 1	53
ROW MONUMENT TYPE 3	25
TOTAL PROJECT QUANTITY SUMMARY	
DESCRIPTION	QTY.
ROW MONUMENT TYPE 1	76
ROW MONUMENT TYPE 3	35

FILE NAME: Y:\NYTC 2007\207-139 MEADE 4-297-65 SEC 5\DELIVERABLES\SENT TO TRANSPORTATION CABINET\CONST. REV. #INDONR06\00CC.DGN
 USER: bmoatt\mgly
 DATE PLOTTED: September 15, 2015
 E-SHEET NAME: R06100CC
 MicroStation v8.11.7.443

RIGHT OF WAY MONUMENT POINTS					RIGHT OF WAY MONUMENT POINTS					RIGHT OF WAY MONUMENT POINTS				
STATION and OFFSET	TYPE	DESCRIPTION	Project Coordinates		STATION and OFFSET	TYPE	DESCRIPTION	Project Coordinates		STATION and OFFSET	TYPE	DESCRIPTION	Project Coordinates	
			NORTH (Y)	EAST (X)				NORTH (Y)	EAST (X)				NORTH (Y)	EAST (X)
800+40.00, 135' LT.	1	R/W MONUMENT	2230183.83	1528300.39	840+00.00, 95' LT.	1	R/W MONUMENT	2234153.27	1528347.55	TOP HILL RD. 48+50.00, 65' RT.	3	R/W MONUMENT	2233324.69	1528182.60
801+50.00, 130' RT.	1	R/W MONUMENT	2230302.63	1528561.56	840+50.00, 130' RT.	1	R/W MONUMENT	2234177.25	1528576.79	ACCESS RD. 854+75 LT. 48+00.00, 57.81' LT.	3	R/W MONUMENT	2235587.73	1528160.09
801+60.00, 105' LT.	1	R/W MONUMENT	2230304.77	1528326.36	841+75.00, 140' RT.	1	R/W MONUMENT	2234300.42	1528601.01	ACCESS RD. 854+75 LT. 48+00.00, 30' RT.	3	R/W MONUMENT	2235505.87	1528190.07
804+50.00, 145' RT.	1	R/W MONUMENT	2230602.96	1528566.52	843+00.00, 95' RT.	1	R/W MONUMENT	2234433.03	1528568.72	FRONTAGE RD. 854+75 LT. 40+73.05, 29.56' LT.	3	R/W MONUMENT	2234647.12	1528339.84
805+00.00, 125' LT.	1	R/W MONUMENT	2230643.91	1528295.00	843+00.00, 120' LT.	1	R/W MONUMENT	2234450.35	1528354.41	FRONTAGE RD. 854+75 LT. 41+82.63, 30' LT.	3	R/W MONUMENT	2234756.70	1528338.72
806+00.00, 100' RT.	1	R/W MONUMENT	2230751.37	1528516.53	845+00.00, 95' RT.	1	R/W MONUMENT	2234637.71	1528579.84	FRONTAGE RD. 854+75 LT. 44+51.60, 30' LT.	3	R/W MONUMENT	2235025.67	1528337.06
806+38.55, 121.31LT.	1	R/W MONUMENT	2230782.51	1528294.06	845+00.00, 90' LT.	1	R/W MONUMENT	2234642.88	1528394.91	FRONTAGE RD. 854+75 LT. 47+96.52, 30' LT.	3	R/W MONUMENT	2235353.29	1528277.90
806+72.31, 181.23' LT.	1	R/W MONUMENT	2230814.24	1528233.04	845+60.91, 87.04' LT.	1	R/W MONUMENT	2234702.30	1528399.06	FRONTAGE RD. 854+75 LT. 49+70.00, 30' LT.	3	R/W MONUMENT	2235516.18	1528218.24
806+87.72, 120' LT.	3	R/W MONUMENT	2230831.69	1528293.72	848+00.00, 85' RT.	1	R/W MONUMENT	2234944.60	1528566.32					
808+00.00, 100' LT.	1	R/W MONUMENT	2230944.58	1528309.96	848+91.87, 78.8' LT.	1	R/W MONUMENT	2235026.04	1528397.06					
813+60.00, 105' LT.	1	R/W MONUMENT	2231504.09	1528286.24	849+50.00, 130' RT.	1	R/W MONUMENT	2235101.63	1528600.30					
814+06.91, 100' RT.	1	R/W MONUMENT	2231557.84	1528489.55	852+58.17, 96.53' LT.	1	R/W MONUMENT	2235373.92	1528334.24					
814+65.00, 80' RT.	1	R/W MONUMENT	2231615.22	1528467.62	853+00.00, 140' RT.	1	R/W MONUMENT	2235469.48	1528554.71					
815+00.00, 125' LT.	1	R/W MONUMENT	2231643.35	1528261.57	853+77.62, 237.08' RT.	1	R/W MONUMENT	2235578.62	1528625.38					
816+00.00, 145' LT.	1	R/W MONUMENT	2231742.62	1528238.23	854+10.00, 108.8' LT.	1	R/W MONUMENT	2235508.02	1528285.15					
816+70.00, 75' RT.	1	R/W MONUMENT	2231819.94	1528455.77	855+64.46, 85.56' LT.	1	R/W MONUMENT	2235652.18	1528255.89					
817+45.00, 95' RT.	1	R/W MONUMENT	2231895.57	1528473.25	856+52.07, 80.13' LT.	1	R/W MONUMENT	2235729.98	1528225.97					
818+47.70, 99.45' RT.	1	R/W MONUMENT	2231998.36	1528474.26	ACCESS RD. 801+00 46+45.00, 60' RT.	3	R/W MONUMENT	2230176.47	1528080.51					
821+00.00, 130.83' LT.	1	R/W MONUMENT	2232242.82	1528235.67	ACCESS RD. 801+00 46+45.00, 60' LT.	3	R/W MONUMENT	2230296.41	1528076.50					
825+40.17, 101.2' RT.	1	R/W MONUMENT	2232690.36	1528452.87	ACCESS RD. 814+34.50 41+60.08, 100' LT.	3	R/W MONUMENT	2230857.58	1528162.79					
826+54.94, 191.24' LT.	1	R/W MONUMENT	2232798.79	1528157.75	ACCESS RD. 814+34.50 42+20.00, 100' LT.	3	R/W MONUMENT	2230917.46	1528160.78					
828+50.00, 208.77' LT.	1	R/W MONUMENT	2232999.26	1528139.75	ACCESS RD. 814+34.50 42+50.00, 50' LT.	3	R/W MONUMENT	2230949.12	1528209.75					
829+50.00, 88.7' RT.	1	R/W MONUMENT	2233094.65	1528439.00	ACCESS RD. 814+34.50 48+00.00, 50' LT.	3	R/W MONUMENT	2231498.81	1528191.36					
830+00.00, 100' RT.	1	R/W MONUMENT	2233143.64	1528451.72	ACCESS RD. 814+34.50 48+50.00, 65' LT.	3	R/W MONUMENT	2231582.17	1528193.71					
830+00.00, 120' LT.	1	R/W MONUMENT	2233150.74	1528231.83	CEDAR LINE RD. 51+65.39, 28.99' LT.	3	R/W MONUMENT	2231622.30	1528551.71					
831+50.00, 135' LT.	1	R/W MONUMENT	2233303.91	1528223.37	CEDAR FRONTAGE 8+02.79, 45' RT.	3	R/W MONUMENT	2231894.35	1528542.61					
831+75.00, 95' RT.	1	R/W MONUMENT	2233316.30	1528454.40	TOP HILL RD. 45+00.00, 15' RT.	3	R/W MONUMENT	2233695.86	1528104.38					
832+60.00, 130' LT.	1	R/W MONUMENT	2233415.44	1528235.19	TOP HILL RD. 45+00.00, 15' LT.	3	R/W MONUMENT	2233695.95	1528134.38					
834+50.00, 95' RT.	1	R/W MONUMENT	2233586.85	1528474.99	TOP HILL RD. 45+50.00, 40' RT.	3	R/W MONUMENT	2233645.78	1528079.53					
835+10.00, 130' LT.	1	R/W MONUMENT	2233669.03	1528257.07	TOP HILL RD. 45+50.00, 40' LT.	3	R/W MONUMENT	2233646.03	1528159.53					
838+00.00, 115' LT.	1	R/W MONUMENT	2233956.87	1528304.83	TOP HILL RD. 46+50.00, 40' RT.	3	R/W MONUMENT	2233544.29	1528080.02					
838+40.00, 94.85' RT.	1	R/W MONUMENT	2233972.64	1528517.88	TOP HILL RD. 47+65.00, 60' RT.	3	R/W MONUMENT	2233404.26	1528106.32					
838+40.00, 145' RT.	1	R/W MONUMENT	2233966.91	1528567.70	TOP HILL RD. 47+50.00, 40' LT.	3	R/W MONUMENT	2233471.04	1528182.31					
838+45.00, 101.01' LT.	1	R/W MONUMENT	2233999.98	1528323.87										
839+60.00, 94.40' RT.	1	R/W MONUMENT	2234091.90	1528531.14										
839+60.00, 145.00' RT.	1	R/W MONUMENT	2234086.12	1528581.41										
840+00.00, 94.25' RT.	1	R/W MONUMENT	2234131.66	1528535.56										

QUANTITY SUMMARY	
DESCRIPTION	QTY.
ROW MONUMENT TYPE 1	53
ROW MONUMENT TYPE 3	25

TOTAL PROJECT QUANTITY SUMMARY	
DESCRIPTION	QTY.
ROW MONUMENT TYPE 1	76
ROW MONUMENT TYPE 3	35

GEOTECHNICAL NOTES

COUNTY OF	ITEM NO.	SHEET NO.
MEADE	04-297.65	R63

REVISED 9/22/15

1) In accordance with Section 206 of the current Standard Specifications, the moisture content of embankment material shall not vary from the optimum moisture content as determined by KM 64-511 by more than +2 percent or less than -2 percent. This moisture content requirement shall have equal weight with the density requirement when determining the acceptability of embankment construction. Refer to the Family of Curves for moisture/density correlation.

2) All soils, whether from roadway or borrow, may require manipulation to obtain proper moisture content prior to compaction. Direct payment shall not be permitted for rehandling, hauling, stockpiling, and/or manipulating soils.

3) Excavation of surface ditches and channel changes adjacent to embankment areas shall be performed prior to the placement of the adjacent embankments. The material excavated for the channel changes and surface ditches is suitable for embankment construction if dried to proper moisture content in accordance with Section 206 of the current Standard Specifications.

4) The contractor is responsible for conducting any operations necessary to excavate the cut areas to the required typical section. These operations shall be incidental to the unit bid price for roadway excavation or embankment-in-place.

5) The contractor shall construct foundation embankment benches as indicated on the plans and/or as directed by the Engineer, prior to placement of embankments in areas requiring such benches.

6) The contractor shall construct foundation embankment benches and transverse benches as indicated on the plans and/or as directed by the Engineer, prior to placement of embankments in areas requiring such benches.

7) Foundation embankment benches shall be placed in accordance with Standard Drawing RGX-010-03 at the locations listed below and/or as directed by the Engineer.

KY 313
 Station 763+75 RT to Station 765+25 RT Station 832+75 LT to Station 833+75 LT
 Station 770+25 RT to Station 770+75 RT Station 832+75 RT to Station 833+75 RT
 Station 770+75 LT to Station 773+25 LT Station 848+75 RT to Station 851+75 RT
 Station 788+25 LT to Station 790+25 LT Station 852+75 RT to Station 854+25 RT
 Station 793+25 LT to Station 794+25 LT Station 854+25 LT to Station 854+75 LT
 Station 829+25 RT to Station 830+25 RT

KY 1736
 Station 28+75 LT to Station 29+75 LT

Old KY 448
 Station 4+25 LT to Station 4+75 LT

8) Transverse benching and/or perforated pipe underdrains shall be installed at the following approximate locations and any others designated by the Engineer. Contrary to Standard Drawing RDP-006-03, transverse benches and perforated pipe underdrains shall be placed on both the upgrade and downgrade cut to fill transitions.

KY 313
 Station 764+75 Station 808+60
 Station 770+55 Station 823+75
 Station 780+50 Station 830+40
 Station 788+55 Station 836+25
 Station 793+70 Station 843+55

Abersold Lane
 Station 46+25

9) Perforated pipe for subgrade drainage shall be placed in vertical sags in accordance with RDP-005-04 at the following approximate locations and/or where designated by the Engineer.

KY 313	KY 1736	Old KY 448
Station 790+92	Station 27+40	Station 9+63
Station 816+48	Station 30+93	Station 10+91
Station 839+36		

Abersold Lane	Cedar Lane	Frontage Road
Station 49+34	Station 37+12	Station 59+14
Station 50+37		

10) The contractor shall conduct grading operations in such a manner that soil from roadway excavation be stockpiled separately or otherwise manipulated so that ample quantities are available for a chemically stabilized roadbed meeting the specifications in Section 208 of the current Standard Specifications for Road and Bridge Construction. No direct payment will be allowed for such necessary manipulating as stockpiling, hauling and/or handling the material.

11) Material that is determined to be unsuitable for a chemically modified subgrade using lime stabilization (due to high content of silt and/or sand) shall not be used in the top two feet of the subgrade. The Engineer shall determine if the material excavated out of cut areas is suitable for chemical stabilization.

12) The contractor shall conduct grading operations in such a manner that soil (free of rock larger than 4 inches and shale) from roadway excavation be stockpiled separately or otherwise manipulated so that ample quantities are available for a chemically stabilized roadbed meeting the specifications in Section 208 of the current Standard Specifications for Road and Bridge Construction. No direct payment will be allowed for such necessary manipulating as stockpiling, hauling and/or handling the material.

13) In the case that chemical stabilization is not a viable option due to the presence of silty soil in the subgrade, the silty material determined to be unfit for chemical stabilization is to be excavated and replaced with 1 foot of Kentucky Coarse Aggregate #2's, #3's or #23's in accordance with section 805 in the current addition Standard Specifications for Road and Bridge Construction. The aggregate shall be wrapped in Type IV Geotextile Fabric in accordance with sections 214 & 843 of the current addition Standard Specifications for Road and Bridge Construction. This material is expected to be located at the area listed below.

KY 313
 Station 755+50 to Station 765+50

14) In areas where the chemical modification is not feasible (such as crossovers, tie-ins, etc.) a one foot rock roadbed will be required consisting Kentucky Coarse Aggregate #2's, # 3's or #23's in accordance with section 805 of the current addition Standard Specifications for Road and Bridge Construction. The placement of this material is incidental to the unit bid price for roadway excavation or embankment-in-place. The rock roadbed shall be wrapped with Geotextile Fabric; Type IV in accordance with Section 214 & 843 of the Standard Specifications will be required beneath the roadway template. The platform shall extend from shoulder to shoulder in the fills and ditchline to ditchline in the cuts to assure positive drainage. The actual locations will be determined by the Engineer during construction. For purpose of calculating quantities, assume 1,000 linear feet of roadway for this treatment.

15) *See note 103 on sheet R63A for an addendum to this note. All open sinkholes and/or solution cavities within the limits of construction, whether shown on the plans or not, that are not used for drainage purposes, shall be filled and/or capped in accordance with the current edition of Section 215 of the Standard Specifications for Road and Bridge Construction. Sinkholes/solution features were noted at the following approximate locations.

KY 313
 Station 763+35 offset 176' RT
 Station 771+57 offset 19' RT
 Station 829+84 offset 14' RT
 Station 833+34 offset 50' LT
 Station 840+70 offset 180' RT

16) The pond at the following approximate location and any others designated by the Engineer shall be drained; any soft saturated materials stabilized with 2 feet of Kentucky Coarse Aggregate #2's, # 3's or #23's in accordance with section 805 of the current addition Standard Specifications for Road and Bridge Construction. This material shall be wrapped with Geotextile Fabric, Type IV in accordance with sections 214 & 843 of the current addition Standard Specifications for Road and Bridge Construction, as determined by the Engineer.

KY 313
 Station 753+50 offset 30' RT

17) The following sinkhole/basin is proposed to be used for drainage purposes. Therefore, the embankments at these locations shall be constructed with Kentucky Coarse Aggregate # 2's, 3's or 23's, in accordance with the current edition of Section 805 of the Standard Specifications for Road and Bridge Construction, from groundline up to the 100 year highwater elevation, as directed by the Engineer. A Type IV Geotextile in accordance with Section 214 & 843 of the Standard Specifications for Road and Bridge Construction, current edition, shall be placed at all contact points between the soil and rock.

KY 313
 Station 853+90 offset 143' RT

18) In order to provide a working platform for embankment construction, Granular Embankment shall be placed over all soft and/or saturated foundation areas that may be detected during construction and/or to fill and stabilize the existing drains located within the limits of the roadway embankment construction, as directed by the Engineer. The Granular Embankment shall be in accordance with the current edition of Section 805 of the Standard Specifications for Road and Bridge Construction, and the material shall be classified as non-erodible. The required thickness is estimated to be 2.0 ft but the actual thickness and locations of this treatment shall be determined by the Engineer during construction and may depend on seasonal fluctuations in the water table. This material shall be wrapped with Type IV Geotextile Fabric in accordance with Section 214 & 843 of the Standard Specifications for Road and Bridge Construction, current edition. For quantity estimation purposes, this shall include the following areas:

KY 313
 Station 754+50 RT to Station 760+00 RT
 Station 777+00 LT to Station 780+50 LT

DESIGNED BY:	
DATE SUBMITTED:	
Commonwealth of Kentucky DEPARTMENT OF HIGHWAYS COUNTY OF MEADE	
PROJECT NUMBERS:	FD04 SPP 082 0313 NEW ROUTE
GEOTECHNICAL NOTES	

FILE NAME: Y:\KYTC\2007\207-139 MEADE 4-297-65 SEC 5\DELIVERABLES\SENT TO TRANSPORTATION CABINET\FINAL CONST PLAN SUBMITTAL\CONST. REV. #1
 USER: bmattingly
 DATE PLOTTED: September 22, 2015
 E-SHEET NAME: R06300GT
 MicroStation v8.11.7.443

GEOTECHNICAL NOTES

COUNTY OF	ITEM NO.	SHEET NO.
MEADE	04-297.65	R63

REVISED 9/22/15

1) In accordance with Section 206 of the current Standard Specifications, the moisture content of embankment material shall not vary from the optimum moisture content as determined by KM 64-511 by more than +2 percent or less than -2 percent. This moisture content requirement shall have equal weight with the density requirement when determining the acceptability of embankment construction. Refer to the Family of Curves for moisture/density correlation.

2) All soils, whether from roadway or borrow, may require manipulation to obtain proper moisture content prior to compaction. Direct payment shall not be permitted for rehandling, hauling, stockpiling, and/or manipulating soils.

3) Excavation of surface ditches and channel changes adjacent to embankment areas shall be performed prior to the placement of the adjacent embankments. The material excavated for the channel changes and surface ditches is suitable for embankment construction if dried to proper moisture content in accordance with Section 206 of the current Standard Specifications.

4) The contractor is responsible for conducting any operations necessary to excavate the cut areas to the required typical section. These operations shall be incidental to the unit bid price for roadway excavation or embankment-in-place.

5) The contractor shall construct foundation embankment benches as indicated on the plans and/or as directed by the Engineer, prior to placement of embankments in areas requiring such benches.

6) The contractor shall construct foundation embankment benches and transverse benches as indicated on the plans and/or as directed by the Engineer, prior to placement of embankments in areas requiring such benches.

7) Foundation embankment benches shall be placed in accordance with Standard Drawing RGX-010-03 at the locations listed below and/or as directed by the Engineer.

KY 313
 Station 763+75 RT to Station 765+25 RT Station 832+75 LT to Station 833+75 LT
 Station 770+25 RT to Station 770+75 RT Station 832+75 RT to Station 833+75 RT
 Station 770+75 LT to Station 773+25 LT Station 848+75 RT to Station 851+75 RT
 Station 788+25 LT to Station 790+25 LT Station 852+75 RT to Station 854+25 RT
 Station 793+25 LT to Station 794+25 LT Station 854+25 LT to Station 854+75 LT
 Station 829+25 RT to Station 830+25 RT

KY 1736
 Station 28+75 LT to Station 29+75 LT

Old KY 448
 Station 4+25 LT to Station 4+75 LT

8) Transverse benching and/or perforated pipe underdrains shall be installed at the following approximate locations and any others designated by the Engineer. Contrary to Standard Drawing RDP-006-03, transverse benches and perforated pipe underdrains shall be placed on both the upgrade and downgrade cut to fill transitions.

KY 313
 Station 764+75 Station 808+60
 Station 770+55 Station 823+75
 Station 780+50 Station 830+40
 Station 788+55 Station 836+25
 Station 793+70 Station 843+55

Abersold Lane
 Station 46+25

9) Perforated pipe for subgrade drainage shall be placed in vertical sags in accordance with RDP-005-04 at the following approximate locations and/or where designated by the Engineer.

KY 313 Station 790+92 Station 816+48 Station 839+36	KY 1736 Station 27+40 Station 30+93	Old KY 448 Station 9+63 Station 10+91
--	---	---

Abersold Lane Station 49+34 Station 50+37	Cedar Lane Station 37+12	Frontage Road Station 59+14
---	-----------------------------	--------------------------------

10) The contractor shall conduct grading operations in such a manner that soil from roadway excavation be stockpiled separately or otherwise manipulated so that ample quantities are available for a chemically stabilized roadbed meeting the specifications in Section 208 of the current Standard Specifications for Road and Bridge Construction. No direct payment will be allowed for such necessary manipulating as stockpiling, hauling and/or handling the material.

11) Material that is determined to be unsuitable for a chemically modified subgrade using lime stabilization (due to high content of silt and/or sand) shall not be used in the top two feet of the subgrade. The Engineer shall determine if the material excavated out of cut areas is suitable for chemical stabilization.

12) The contractor shall conduct grading operations in such a manner that soil (free of rock larger than 4 inches and shale) from roadway excavation be stockpiled separately or otherwise manipulated so that ample quantities are available for a chemically stabilized roadbed meeting the specifications in Section 208 of the current Standard Specifications for Road and Bridge Construction. No direct payment will be allowed for such necessary manipulating as stockpiling, hauling and/or handling the material.

13) In the case that chemical stabilization is not a viable option due to the presence of silty soil in the subgrade, the silty material determined to be unfit for chemical stabilization is to be excavated and replaced with 1 foot of Kentucky Coarse Aggregate #2's, #3's or #23's in accordance with section 805 in the current addition Standard Specifications for Road and Bridge Construction. The aggregate shall be wrapped in Type IV Geotextile Fabric in accordance with sections 214 & 843 of the current addition Standard Specifications for Road and Bridge Construction. This material is expected to be located at the area listed below.

KY 313
 Station 755+50 to Station 765+50

14) In areas where the chemical modification is not feasible (such as crossovers, tie-ins, etc.) a one foot rock roadbed will be required consisting Kentucky Coarse Aggregate #2's, #3's or #23's in accordance with section 805 of the current addition Standard Specifications for Road and Bridge Construction. The placement of this material is incidental to the unit bid price for roadway excavation or embankment-in-place. The rock roadbed shall be wrapped with Geotextile Fabric; Type IV in accordance with Section 214 & 843 of the Standard Specifications will be required beneath the roadway template. The platform shall extend from shoulder to shoulder in the fills and ditchline to ditchline in the cuts to assure positive drainage. The actual locations will be determined by the Engineer during construction. For purpose of calculating quantities, assume 1,000 linear feet of roadway for this treatment.

15) *See note 103 on sheet R63A for an addendum to this note.
 All open sinkholes and/or solution cavities within the limits of construction, whether shown on the plans or not, that are not used for drainage purposes, shall be filled and/or capped in accordance with the current edition of Section 215 of the Standard Specifications for Road and Bridge Construction. Sinkholes/solution features were noted at the following approximate locations.

KY 313
 Station 763+35 offset 176' RT
 Station 771+57 offset 19' RT
 Station 829+84 offset 14' RT
 Station 833+34 offset 50' LT
 Station 840+70 offset 180' RT

16) The pond at the following approximate location and any others designated by the Engineer shall be drained; any soft saturated materials stabilized with 2 feet of Kentucky Coarse Aggregate #2's, #3's or #23's in accordance with section 805 of the current addition Standard Specifications for Road and Bridge Construction. This material shall be wrapped with Geotextile Fabric, Type IV in accordance with sections 214 & 843 of the current addition Standard Specifications for Road and Bridge Construction, as determined by the Engineer.

KY 313
 Station 753+50 offset 30' RT

17) The following sinkhole/basin is proposed to be used for drainage purposes. Therefore, the embankments at these locations shall be constructed with Kentucky Coarse Aggregate #2's, 3's or 23's, in accordance with the current edition of Section 805 of the Standard Specifications for Road and Bridge Construction, from groundline up to the 100 year highwater elevation, as directed by the Engineer. A Type IV Geotextile in accordance with Section 214 & 843 of the Standard Specifications for Road and Bridge Construction, current edition, shall be placed at all contact points between the soil and rock.

KY 313
 Station 853+90 offset 143' RT

18) In order to provide a working platform for embankment construction, Granular Embankment shall be placed over all soft and/or saturated foundation areas that may be detected during construction and/or to fill and stabilize the existing drains located within the limits of the roadway embankment construction, as directed by the Engineer. The Granular Embankment shall be in accordance with the current edition of Section 805 of the Standard Specifications for Road and Bridge Construction, and the material shall be classified as non-erodible. The required thickness is estimated to be 2.0 ft but the actual thickness and locations of this treatment shall be determined by the Engineer during construction and may depend on seasonal fluctuations in the water table. This material shall be wrapped with Type IV Geotextile Fabric in accordance with Section 214 & 843 of the Standard Specifications for Road and Bridge Construction, current edition. For quantity estimation purposes, this shall include the following areas:

KY 313
 Station 754+50 RT to Station 760+00 RT
 Station 777+00 LT to Station 780+50 LT

DESIGNED BY:	
DATE SUBMITTED:	
<p>Commonwealth of Kentucky DEPARTMENT OF HIGHWAYS COUNTY OF MEADE</p>	
PROJECT NUMBERS: F004 SPP 082 0313 NEW ROUTE	

FILE NAME: Y:\KYTC\2007\207-139 MEADE 4-297-65 SEC 5\DELIVERABLES\SENT TO TRANSPORTATION CABINET\FINAL CONST PLAN SUBMITTAL\CONST. REV. #1
 USER: bmattingly
 DATE PLOTTED: September 22, 2015
 E-SHEET NAME: R06300G
 MicroStation v8.11.7.443

PROPOSAL BID ITEMS

151051

Page 1 of 4

Report Date 9/22/15

Section: 0001 - PAVING

LINE	BID CODE	ALT	DESCRIPTION	QUANTITY	UNIT	UNIT PRIC	FP	AMOUNT
0010	00003		CRUSHED STONE BASE	46,744.00	TON		\$	
0020	00013		LIME STABILIZED ROADBED	61,610.00	SQYD		\$	
0030	00014		LIME (REVISED: 9-22-15)	1,298.00	TON		\$	
0040	00020		TRAFFIC BOUND BASE	539.00	TON		\$	
0050	00100		ASPHALT SEAL AGGREGATE	102.00	TON		\$	
0060	00103		ASPHALT SEAL COAT	12.00	TON		\$	
0070	00190		LEVELING & WEDGING PG64-22	140.00	TON		\$	
0080	00214		CL3 ASPH BASE 1.00D PG64-22	15,678.00	TON		\$	
0090	00221		CL2 ASPH BASE 0.75D PG64-22	6,696.00	TON		\$	
0100	00223		CL3 ASPH BASE 0.75D PG64-22	7,429.00	TON		\$	
0110	00301		CL2 ASPH SURF 0.38D PG64-22	3,662.00	TON		\$	
0120	00358		ASPHALT CURING SEAL	62.00	TON		\$	
0130	00388		CL3 ASPH SURF 0.38B PG64-22	3,458.00	TON		\$	
0140	02101		CEM CONC ENT PAVEMENT-8 IN	261.00	SQYD		\$	
0150	02702		SAND FOR BLOTTER	154.00	TON		\$	

Section: 0002 - ROADWAY

LINE	BID CODE	ALT	DESCRIPTION	QUANTITY	UNIT	UNIT PRIC	FP	AMOUNT
0160	00071		CRUSHED AGGREGATE SIZE NO 57	120.00	TON		\$	
0170	00078		CRUSHED AGGREGATE SIZE NO 2	13,003.00	TON		\$	
0180	01000		PERFORATED PIPE-4 IN	2,462.00	LF		\$	
0190	01010		NON-PERFORATED PIPE-4 IN	1,696.00	LF		\$	
0200	01020		PERF PIPE HEADWALL TY 1-4 IN	7.00	EACH		\$	
0210	01028		PERF PIPE HEADWALL TY 3-4 IN	28.00	EACH		\$	
0220	01310		REMOVE PIPE	244.00	LF		\$	
0230	01982		DELINEATOR FOR GUARDRAIL MONO DIRECTIONAL WHITE	38.00	EACH		\$	
0240	02014		BARRICADE-TYPE III	14.00	EACH		\$	
0250	02091		REMOVE PAVEMENT	13,831.00	SQYD		\$	
0260	02159		TEMP DITCH	11,347.00	LF		\$	
0270	02160		CLEAN TEMP DITCH	11,347.00	LF		\$	
0280	02191		STRUCTURE DEMOLITION	1.00	EACH		\$	
0290	02200		ROADWAY EXCAVATION	228,002.00	CUYD		\$	
0300	02203		STRUCTURE EXCAV-UNCLASSIFIED	1,792.00	CUYD		\$	
0310	02223		GRANULAR EMBANKMENT (REVISED: 9-22-15)	19,918.00	CUYD		\$	
0320	02242		WATER	430.00	MGAL		\$	
0330	02262		FENCE-WOVEN WIRE TYPE 1 (REVISED: 9-22-15)	19,729.00	LF		\$	
0340	02360		GUARDRAIL TERMINAL SECTION NO 1	3.00	EACH		\$	
0350	02371		GUARDRAIL END TREATMENT TYPE 7	6.00	EACH		\$	
0360	02391		GUARDRAIL END TREATMENT TYPE 4A	3.00	EACH		\$	
0370	02397		TEMP GUARDRAIL	400.00	LF		\$	
0380	02429		RIGHT-OF-WAY MONUMENT TYPE 1	76.00	EACH		\$	
0390	02432		WITNESS POST	111.00	EACH		\$	

PROPOSAL BID ITEMS

151051

Page 2 of 4

Report Date 9/22/15

LINE	BID CODE	ALT	DESCRIPTION	QUANTITY	UNIT	UNIT PRIC	FP	AMOUNT
0400	02469		CLEAN SINKHOLE	17.00	EACH		\$	
0410	02475		PLUG WATER WELL	1.00	EACH		\$	
0420	02483		CHANNEL LINING CLASS II	966.00	TON		\$	
0430	02545		CLEARING AND GRUBBING 73 ACRES	1.00	LS		\$	
0440	02555		CONCRETE-CLASS B	356.00	CUYD		\$	
0450	02562		TEMPORARY SIGNS	1,396.00	SQFT		\$	
0460	02585		EDGE KEY	280.00	LF		\$	
0470	02597		FABRIC-GEOTEXTILE TYPE II	1,200.00	SQYD		\$	
0480	02599		FABRIC-GEOTEXTILE TYPE IV	46,369.00	SQYD		\$	
0490	02600		FABRIC GEOTEXTILE TY IV FOR PIPE	4,552.00	SQYD	\$2.00	\$	\$9,104.00
0500	02650		MAINTAIN & CONTROL TRAFFIC	1.00	LS		\$	
0510	02651		DIVERSIONS (BY-PASS DETOURS) #1	1.00	LS		\$	
0520	02651		DIVERSIONS (BY-PASS DETOURS) #2	1.00	LS		\$	
0530	02671		PORTABLE CHANGEABLE MESSAGE SIGN	6.00	EACH		\$	
0540	02676		MOBILIZATION FOR MILL & TEXT	1.00	LS		\$	
0550	02677		ASPHALT PAVE MILLING & TEXTURING	714.00	TON		\$	
0560	02690		SAFELoading	9.00	CUYD		\$	
0570	02696		SHOULDER RUMBLE STRIPS-SAWED	6,816.00	LF		\$	
0580	02701		TEMP SILT FENCE	11,347.00	LF		\$	
0590	02703		SILT TRAP TYPE A	76.00	EACH		\$	
0600	02704		SILT TRAP TYPE B	76.00	EACH		\$	
0610	02705		SILT TRAP TYPE C	76.00	EACH		\$	
0620	02706		CLEAN SILT TRAP TYPE A	228.00	EACH		\$	
0630	02707		CLEAN SILT TRAP TYPE B	228.00	EACH		\$	
0640	02708		CLEAN SILT TRAP TYPE C	228.00	EACH		\$	
0650	02709		CLEAN TEMP SILT FENCE	11,347.00	LF		\$	
0660	02726		STAKING	1.00	LS		\$	
0670	02775		ARROW PANEL	2.00	EACH		\$	
0680	02998		MASONRY COATING	378.00	SQYD		\$	
0690	05950		EROSION CONTROL BLANKET	22,469.00	SQYD		\$	
0700	05952		TEMP MULCH	369,827.00	SQYD		\$	
0710	05953		TEMP SEEDING AND PROTECTION	36,983.00	SQYD		\$	
0720	05963		INITIAL FERTILIZER	3.00	TON		\$	
0730	05964		20-10-10 FERTILIZER	14.00	TON		\$	
0740	05985		SEEDING AND PROTECTION	275,491.00	SQYD		\$	
0750	05989		SPECIAL SEEDING CROWN VETCH	38,969.00	SQYD		\$	
0760	05990		SODDING	8,951.00	SQYD		\$	
0770	05992		AGRICULTURAL LIMESTONE	171.00	TON		\$	
0780	06510		PAVE STRIPING-TEMP PAINT-4 IN	79,688.00	LF		\$	
0790	06514		PAVE STRIPING-PERM PAINT-4 IN	75,120.00	LF		\$	
0800	06567		PAVE MARKING-THERMO STOP BAR-12IN	45.00	LF		\$	
0810	06568		PAVE MARKING-THERMO STOP BAR-24IN	108.00	LF		\$	
0820	06574		PAVE MARKING-THERMO CURV ARROW	18.00	EACH		\$	
0830	06589		PAVEMENT MARKER TYPE V-MW	70.00	EACH		\$	
0840	06591		PAVEMENT MARKER TYPE V-BY	161.00	EACH		\$	
0850	10020NS		FUEL ADJUSTMENT	71,473.00	DOLL	\$1.00	\$	\$71,473.00
0860	10030NS		ASPHALT ADJUSTMENT	67,232.00	DOLL	\$1.00	\$	\$67,232.00
0870	20458ES403		CENTERLINE RUMBLE STRIPS	10,175.00	LF		\$	

PROPOSAL BID ITEMS

151051

Page 3 of 4

Report Date 9/22/15

LINE	BID CODE	ALT	DESCRIPTION	QUANTITY	UNIT	UNIT PRIC	FP	AMOUNT
0880	20550ND		SAWCUT PAVEMENT	2,055.00	LF		\$	
0890	21289ED		LONGITUDINAL EDGE KEY	1,449.00	LF		\$	
0900	21802EN		G/R STEEL W BEAM-S FACE (7 FT POST)	3,337.50	LF		\$	
0910	22664EN		WATER BLASTING EXISTING STRIPE	3,000.00	LF		\$	
0920	22941ND		CLEAN MODIFIED SILT TRAP	12.00	EACH		\$	
0930	23274EN11F		TURF REINFORCEMENT MAT 1	4,275.00	SQYD		\$	
0940	23988EC		GRASS SWALE	4,413.00	SQYD		\$	
0950	24540		R/W MONUMENT TYPE 3	35.00	EACH		\$	

Section: 0003 - DRAINAGE

LINE	BID CODE	ALT	DESCRIPTION	QUANTITY	UNIT	UNIT PRIC	FP	AMOUNT
0960	00440		ENTRANCE PIPE-15 IN	668.00	LF		\$	
0970	00462		CULVERT PIPE-18 IN	1,077.00	LF		\$	
0980	00464		CULVERT PIPE-24 IN	488.00	LF		\$	
0990	00466		CULVERT PIPE-30 IN	206.00	LF		\$	
1000	01204		PIPE CULVERT HEADWALL-18 IN	6.00	EACH		\$	
1010	01208		PIPE CULVERT HEADWALL-24 IN	5.00	EACH		\$	
1020	01450		S & F BOX INLET-OUTLET-18 IN	16.00	EACH		\$	
1030	01451		S & F BOX INLET-OUTLET-24 IN	8.00	EACH		\$	
1040	01452		S & F BOX INLET-OUTLET-30 IN	6.00	EACH		\$	
1050	02483		CHANNEL LINING CLASS II	426.00	TON		\$	
1060	05950		EROSION CONTROL BLANKET	91.00	SQYD		\$	
1070	21661ES706		BORE AND JACK PIPE 24 IN	134.00	LF		\$	
1080	24814EC		PIPELINE INSPECTION	2,130.00	LF		\$	

Section: 0004 - SIGNALIZATION

LINE	BID CODE	ALT	DESCRIPTION	QUANTITY	UNIT	UNIT PRIC	FP	AMOUNT
1090	04793		CONDUIT-1 1/4 IN	259.00	LF		\$	
1100	04795		CONDUIT-2 IN	671.00	LF		\$	
1110	04811		ELECTRICAL JUNCTION BOX TYPE B	9.00	EACH		\$	
1120	04820		TRENCHING AND BACKFILLING	930.00	LF		\$	
1130	04830		LOOP WIRE	2,418.00	LF		\$	
1140	04844		CABLE-NO. 14/5C	810.00	LF		\$	
1150	04845		CABLE-NO. 14/7C	220.00	LF		\$	
1160	04850		CABLE-NO. 14/1 PAIR	4,945.00	LF		\$	
1170	04885		MESSENGER-10800 LB	455.00	LF		\$	
1180	04895		LOOP SAW SLOT AND FILL	908.00	LF		\$	
1190	04931		INSTALL CONTROLLER TYPE 170	1.00	EACH		\$	
1200	04932		INSTALL STEEL STRAIN POLE	4.00	EACH		\$	
1210	20094ES835		TEMP RELOCATION OF SIGNAL HEAD	20.00	EACH		\$	
1220	20188NS835		INSTALL LED SIGNAL-3 SECTION	7.00	EACH		\$	
1230	20189NS835		INSTALL LED SIGNAL-5 SECTION	1.00	EACH		\$	
1240	20266ES835		INSTALL LED SIGNAL- 4 SECTION	2.00	EACH		\$	
1250	21543EN		BORE AND JACK CONDUIT	50.00	LF		\$	
1260	23157EN		TRAFFIC SIGNAL POLE BASE	20.00	CUYD		\$	

151051

PROPOSAL BID ITEMS

Page 4 of 4

Report Date 9/22/15

LINE	BID CODE	ALT	DESCRIPTION	QUANTITY	UNIT	UNIT PRIC	FP	AMOUNT
1270	23982EC		INSTALL ANTENNA	1.00	EACH		\$	

Section: 0005 - DEMOBILIZATION &/OR MOBILIZATION

LINE	BID CODE	ALT	DESCRIPTION	QUANTITY	UNIT	UNIT PRIC	FP	AMOUNT
1280	02568		MOBILIZATION	1.00	LS		\$	
1290	02569		DEMOBILIZATION	1.00	LS		\$	

DIVISION OF TRAFFIC OPERATIONS

MEADE COUNTY - Director
 Phone (502) 664-3626
 FD04 SPP 0820913 NEW ROUTE
 FAX (502) 664-7759

**RECOMMENDATION FOR PICKUP OF ITEMS TO BE INSTALLED
 ON TRAFFIC SIGNALS/LIGHTING**

Item Number: 4-297.65
 County: MEADE
 Description: KY 313/KY 448 @ KY 1638

Cabinets	Master code	
1	T-01-0020	Base Mounted 332 Cabinet
1	T-01-0100	170 Controller
1	T-01-0501	Conflict Monitor, Model 2018
8	T-01-0600	Loop Detector, Model 222
8	T-01-0700	Load Switches

Signals		
7	T-02-0009	Siemens 3 Section Signal
4	T-02-0032	Siemen 3 section backplate
2	T-02-0033	Siemen 4 section 12" signal (poly)
1	T-02-0040	Siemen 5 section, 12 inch signal (poly)
2	T-02-0043	Siemen 4-sec. straight signal backplate
2	T-02-0300	LED Module 12" red arrow
5	T-02-0310	LED Module 12" yellow arrow
3	T-02-0320	LED Module 12" green arrow
8	T-02-0330	LED Module 12" red ball
8	T-02-0340	LED Module 12" yellow ball
8	T-02-0350	LED Module 12" green ball

Special items		
1	T-02-0520	Antenna 10 db yagi
1	T-03-0240	Jumper 60' N-N RG-213

Poles		
2	T-04-0051	Steel Strain Pole 36 foot
1	T-04-0054	Steel Strain Pole 38 foot
1	T-04-0055	Steel Strain Pole 40 foot

Electrical Contractor Name _____
 Electrical Contractor Supervisor _____ Contact number for Supervisor _____
 Project Engineer _____ Contact number for Project Engineer _____
 Project Engineer attests that the mentioned contractor is the actual electrical contractor on this project
 Signature of Project Engineer or Designee _____

04-27.65

Temporary pipes are noted in the MOT phasing sheets and KY 313 cross-sections. The following list is provided to aid in finding the temporary pipes.

PIPE	KY 313 STA.	MOT SHEET	CROSS-SECTION	COMMENT
TEMPORARY ENTRANCE PIPE	763+73 LT.	R42	X18	CROSS-SECTION X18 SHOWS TEMP. 36 L.F. - 18" ENT. PIPE
TEMPORARY CONNECTOR PIPE	775+73 LT.	R42	X29	CROSS-SECTION X29 SHOWS TEMP. 36 L.F. - 18" PIPE
TEMP. 18" PIPE	803+50 RT.	R43	X52(PPIPE NOT SHOWN)	R43 SHOWS TEMP. 18" PIPE RIGHT OF STATION 803+50. THE INLET ELEVATION OF THE PIPE IS THE BOTTOM OF PROPOSED DITCH ELEVATION 654.77 AND THE PIPE IS 50 L.F. LONG
TEMP. ENTRANCE PIPE	838+90 RT.	R43	X80	CROSS-SECTION X80 SHOWS TEMP. 40 L.F. - 15" ENT. PIPE